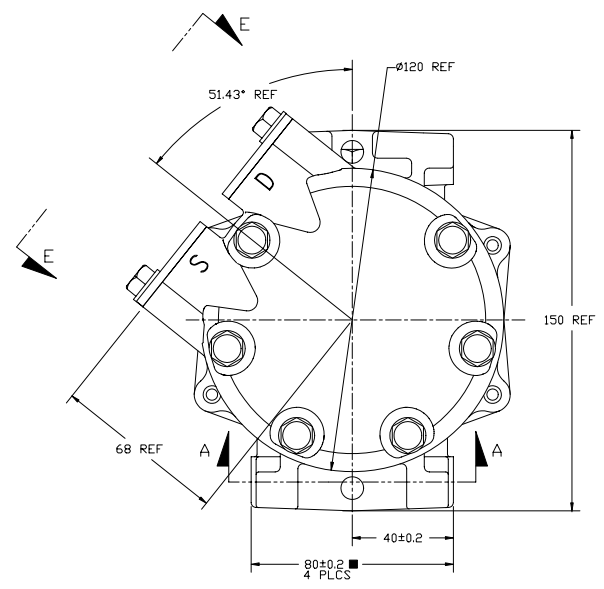
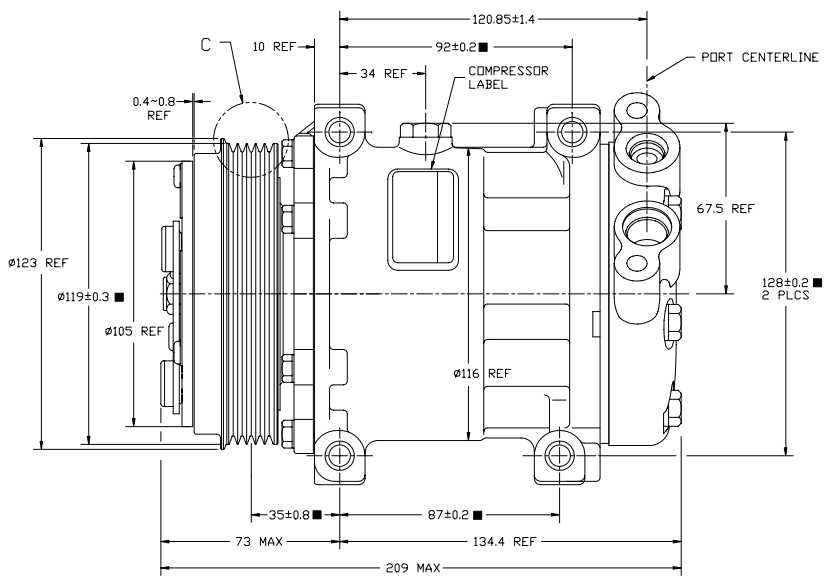
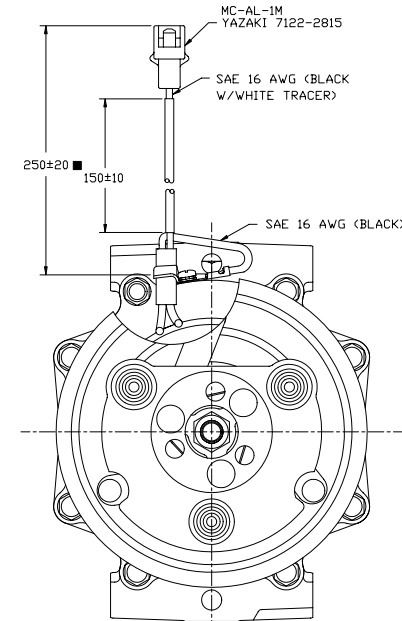
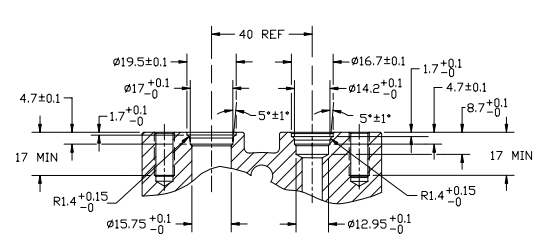
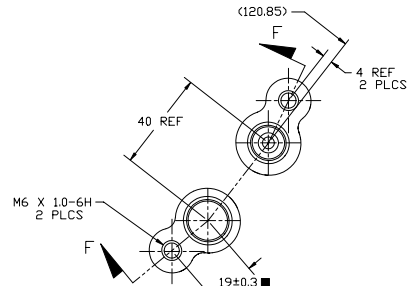
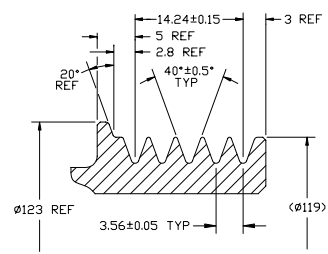
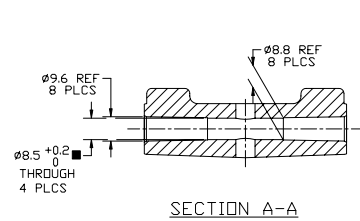


PDCN	REV.	APPV. DATE	REVISIONS		DWN	ESGN	CHK	APPV.
			INITIAL RELEASE	REF ADJAR.				



COMPRESSOR SPECIFICATIONS

DISPLACEMENT PER REVOLUTION	154.9cc / rev. (9.5cuin. / rev.)
MAXIMUM ALLOWABLE R.P.M.	8000 R.P.M.
MAXIMUM ALLOWABLE CONTINUOUS R.P.M.	6000 R.P.M.
REFRIGERANT	R134a
OIL (SP-20)	240cc (8.1 fl.oz.)
WEIGHT	TBD

CLUTCH SPECIFICATIONS

RATED VOLTAGE	DC 12V
BREAKAWAY TORQUE	2.9 kgf-n min. @ 12V
MINIMUM ENGAGEMENT VOLTAGE	7.5V @ AIR GAP 0.6mm REF.
POWER CONSUMPTION	51 W MAX
BELT TYPE	PVS
MAXIMUM ALLOWABLE BELT TENSION	75 kgf
PULLEY DIAMETER	Ø119mm (Ø4.69 in.)
CLUTCH TYPE	STANDARD

SPECIAL CHARACTERISTICS	
■ DR <C>	NON-SAFETY/REGULATORY SPECIAL CHARACTERISTICS WHERE VERIFICATION IS REQUIRED, BUT ONGOING PROCESS CONTROL IS NOT REQUIRED
◇ DR <R>	NON-SAFETY/REGULATORY SPECIAL CHARACTERISTICS WHICH DEMAND MANDATORY PROCESS CONTROL FOR VERIFICATION
▼ DR <S>	SAFETY/EMISSIONS/NOISE/THEFT PROTECTION

REV. LEVEL	RELEASED FOR ENG. DEVELOPMENT		SANDEN SANDEN INTERNATIONAL (U.S.A.), INC. DRAWN SCALE REF 1:1 PLOTTED SCALE REF 1:1 METRIC
CHK	Wong 1/17/08		
APPV. DATE		This drawing and the information contained herein are CONFIDENTIAL and PROPRIETARY to Sanden International (U.S.A.), Inc., and its disclosure to others without the written permission of Sanden International (U.S.A.), Inc.	
REV. LEVEL	RELEASED FOR DESIGN VALIDATION	INTERPRETATION OF THIS DRAWING PER ASME Y14.5M-1994	
APPV. DATE		THIRD ANGLE PROJECTION 	
REV. LEVEL	RELEASED FOR PRODUCTION VAL'S	MATERIAL:	
APPV. DATE		NAME:	
REV. LEVEL	RELEASED FOR PRODUCTION	COMPRESSOR	
APPV. DATE		DWG. NO.	
REV. LEVEL	RELEASED FOR PRODUCTION	4855-6000	
APPV. DATE		REV. A	

DO NOT SCALE