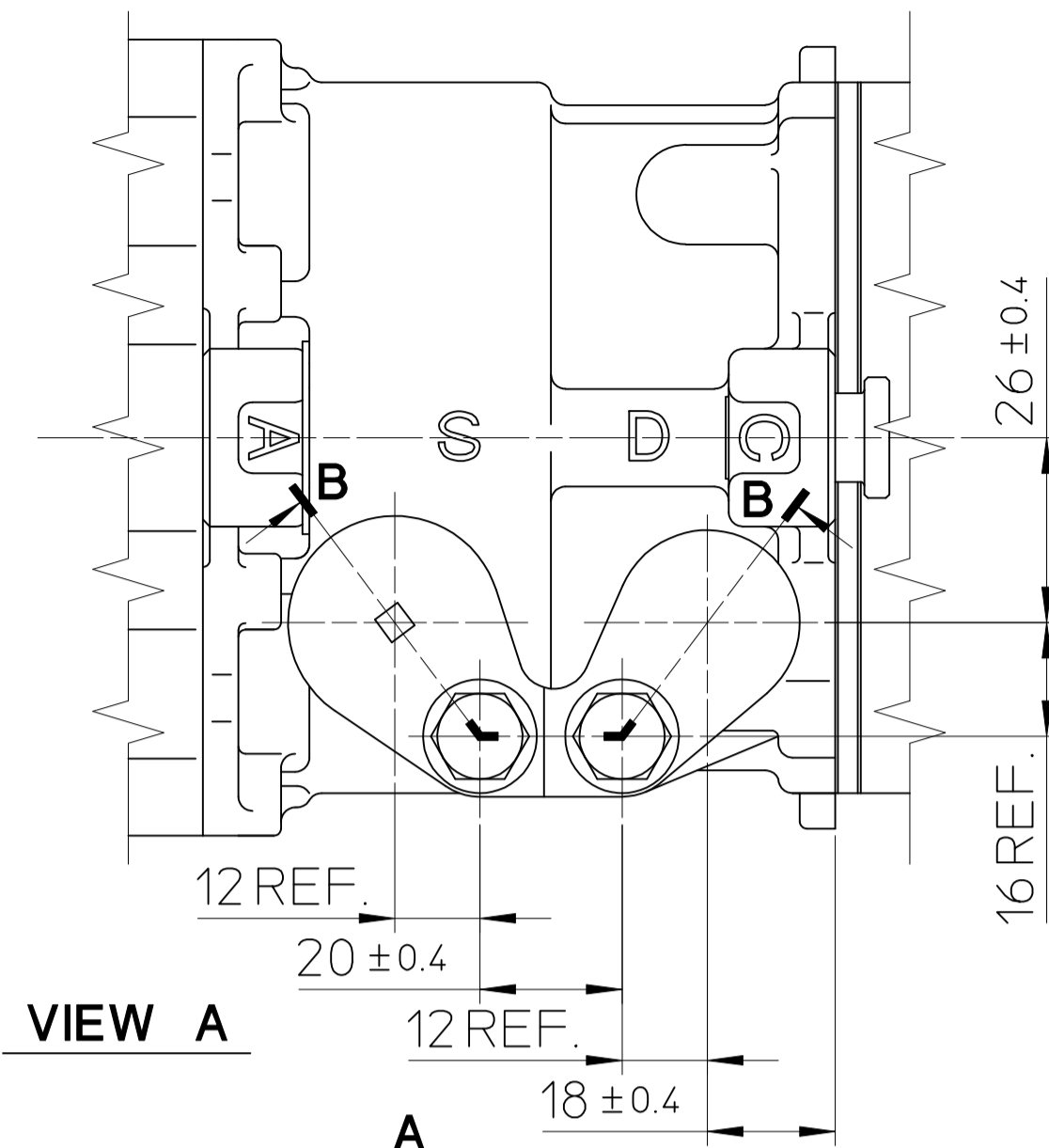
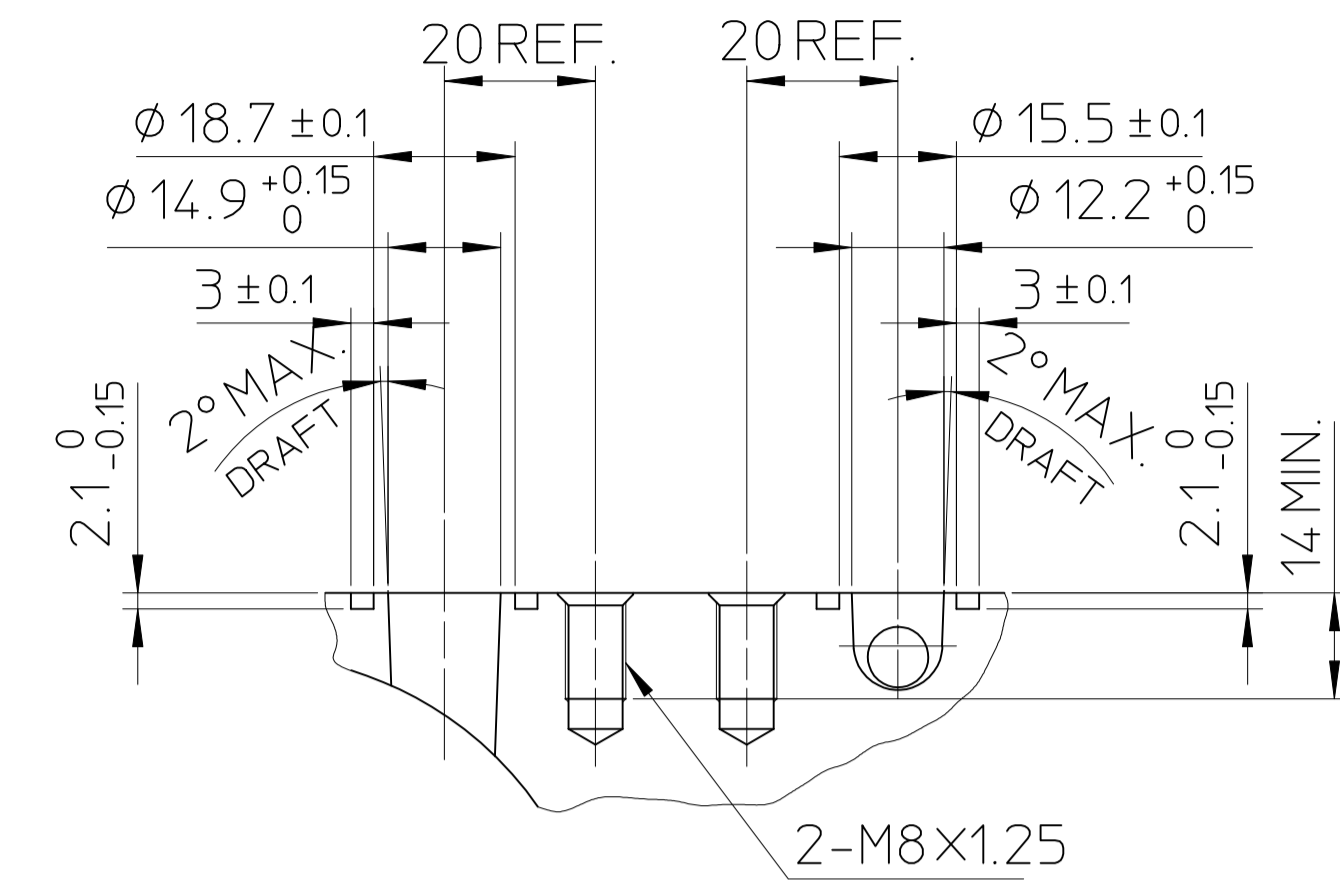


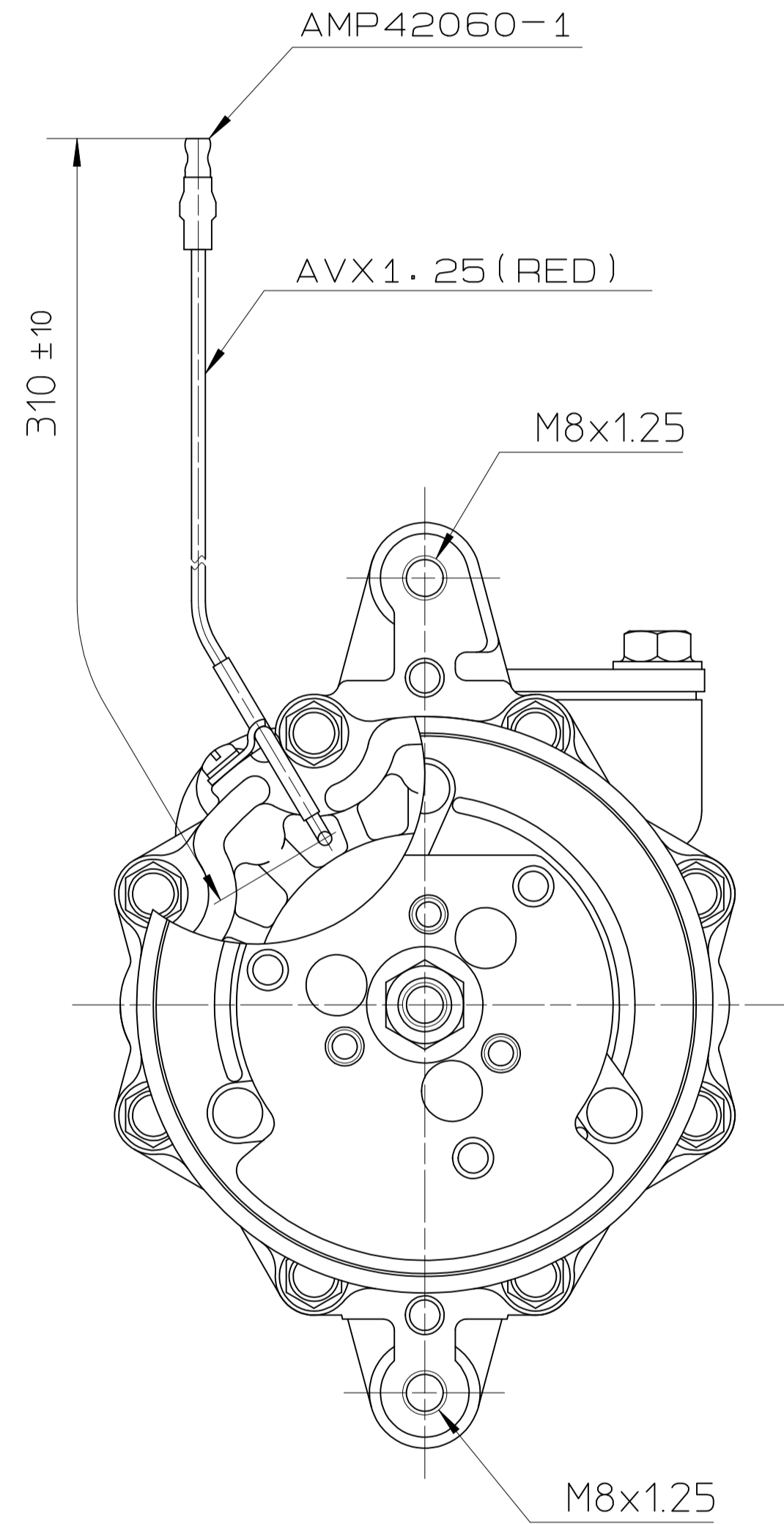
DETAIL OF ROTOR GROOVE (2:1)



VIEW A

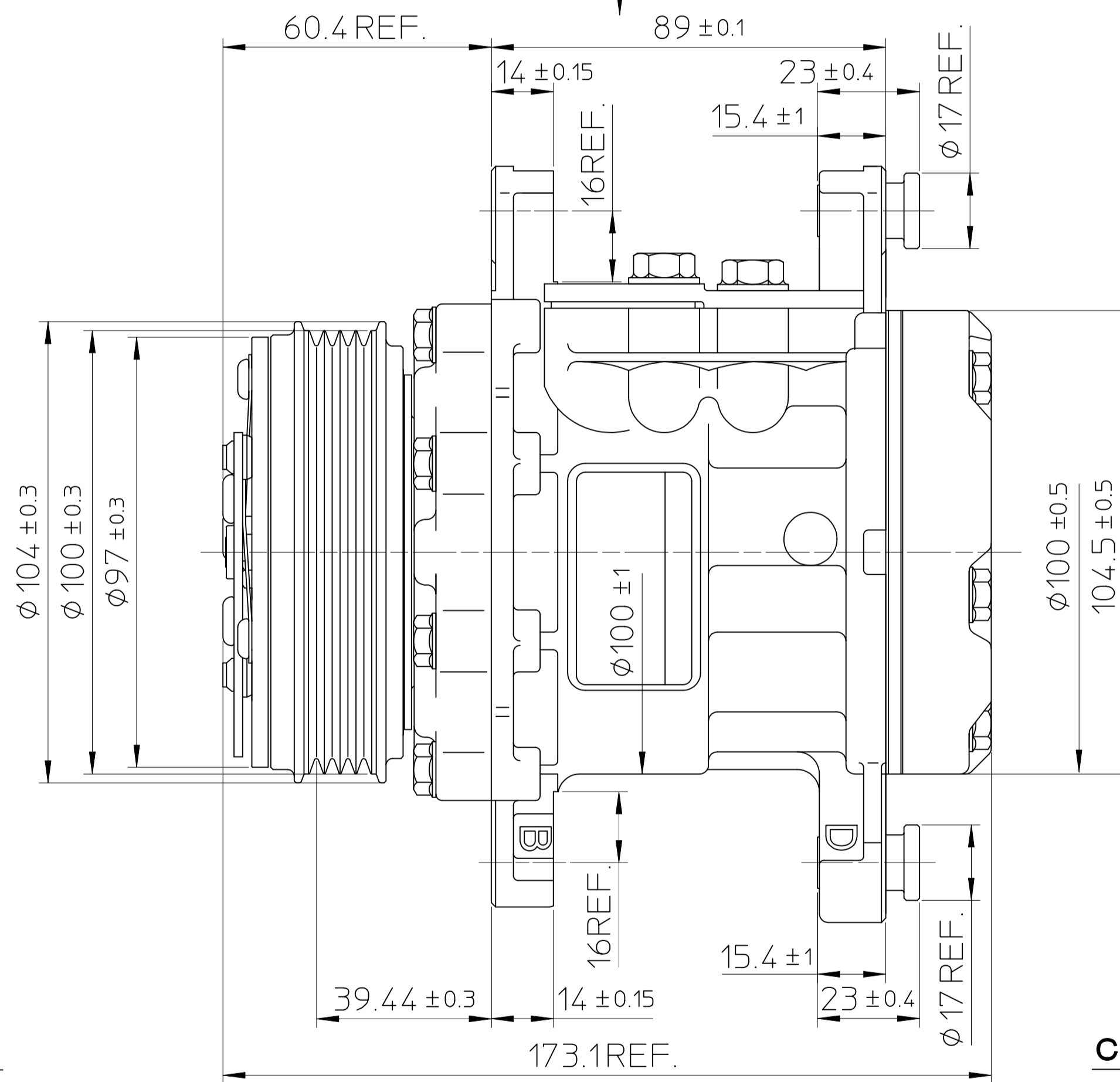


PARTIAL SECT. B-B



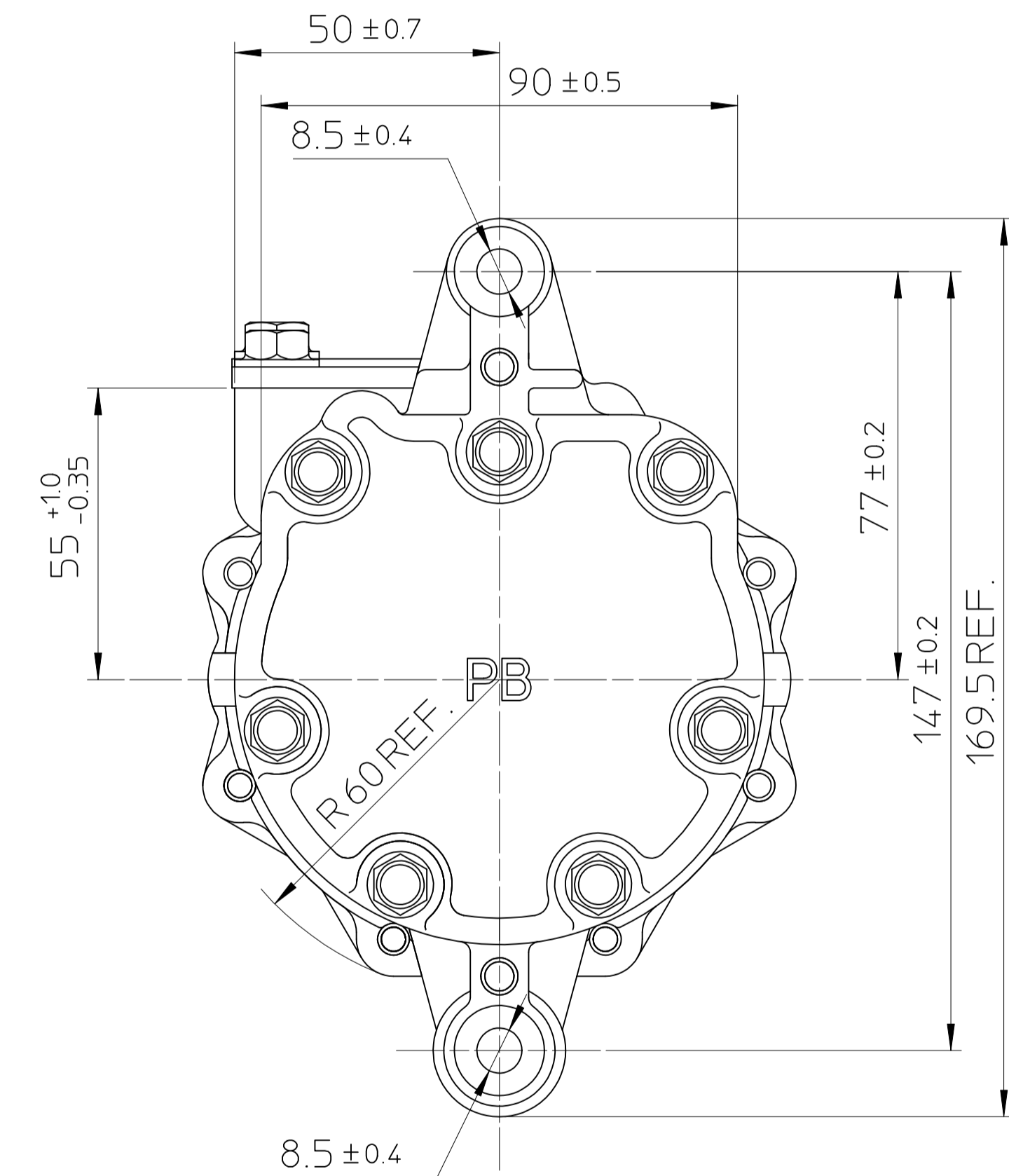
COMPRESSOR SPECIFICATIONS

BORE	Ø 25.4	mm
STROKE	28.1	mm
DISPLACEMENT PER REVOLUTION	99.8	cc/rev.
ROTATION	CLOCKWISE	
NUMBER OF CYLINDERS	7	
MAXIMUM ALLOWABLE r.p.m.	9300	r.p.m.
MAXIMUM ALLOWABLE CONTINUOUS r.p.m.	6500	r.p.m.
REFRIGERANT	R134a	
OIL : SP-10 OR EQUIV.	100	cc
WEIGHT	2.8	kg



CLUTCH SPECIFICATIONS

RATED VOLTAGE	DC 12 V
BREAKAWAY TORQUE	2.35 kg-m
MINIMUM ENGAGEMENT VOLTAGE	7.5 V MAX.
POWER CONSUMPTION	43 W (CU)
MAXIMUM ALLOWABLE r.p.m.	9300 r.p.m.
MAXIMUM ALLOWABLE CONTINUOUS r.p.m.	6500 r.p.m.
BELT TYPE	PV TYPE
PULLEY DIAMETER	Ø100 mm
WEIGHT	kg



7171

UNCONTROLLED COPY

MATERIAL		PART NO.	7171	NAME	COMPRESSOR
THIRD ANGLE PROJECTION		SCALE	1 : 1	MODEL	SD7B10PB7171
DESIGNED BY	Y.Aoyama	DATE	15. Oct. 1996	DRAWING NO.	7171 - 6000
CHECKED BY	M.Ida	DATE	15. Oct. 1996		
APPROVED BY	H.Akabane	DATE	15. Oct. 1996		
NO.	REVISION RECORD	BY	DATE		