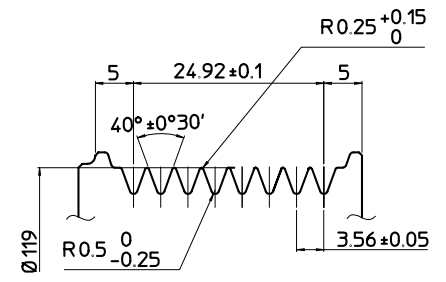
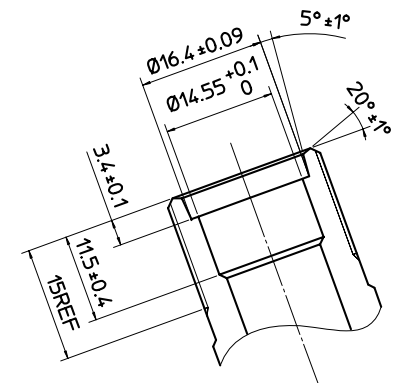


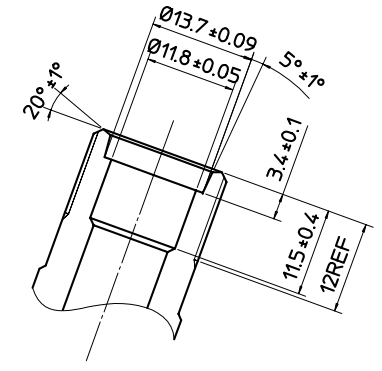
PARTIAL SECT A-A



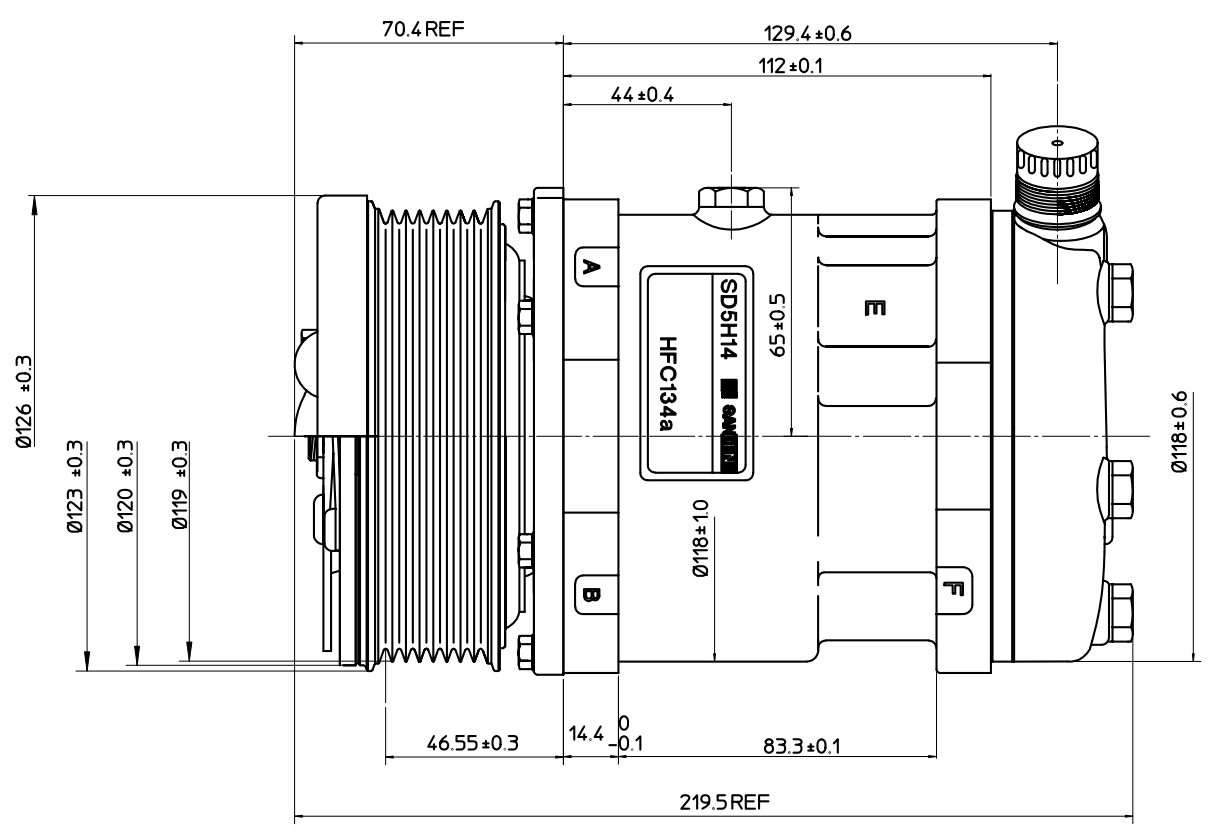
DETAIL OF ROTOR GROOVE(2:1)



PARTIAL SECT B-B (2:1)

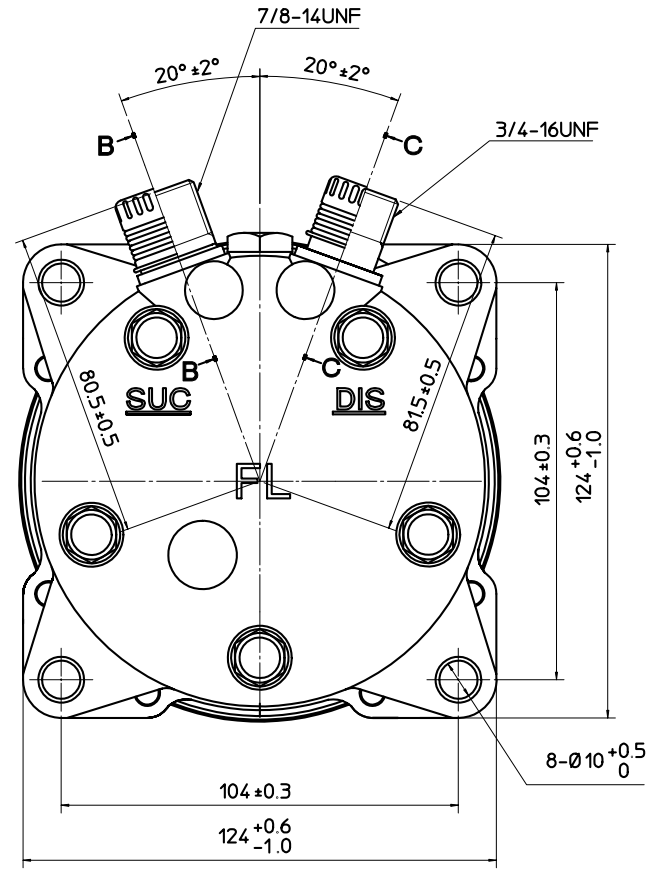


PARTIAL SECT C-C (2:1)



COMPRESSOR SPECIFICATIONS

BORE	Ø35 mm
STROKE	28.6 mm
DISPLACEMENT PER REVOLUTION	138 cc/rev
NUMBER OF CYLINDERS	5
MAXIMUM ALLOWABLE r.p.m.	4000 r.p.m.
MAXIMUM ALLOWABLE CONTINUOUS r.p.m.	4000 r.p.m.
REFRIGERANT	HFC134a
OIL (SP-20 OR EQUIV.)	175 cc
ROTATION (CLUTCH SIDE VIEW)	COUNTER-CLOCKWISE
WEIGHT	kg



CLUTCH SPECIFICATIONS

RATED VOLTAGE	DC 24 V
BREAKAWAY TORQUE	3.5 kg-m
MINIMUM ENGAGEMENT VOLTAGE	16 V max
POWER CONSUMPTION	42 W (CU)
MAXIMUM ALLOWABLE r.p.m.	4000 r.p.m.
MAXIMUM ALLOWABLE CONTINUOUS r.p.m.	4000 r.p.m.
BELT TYPE	PV
PULLEY DIAMETER	Ø119 mm
WEIGHT	kg



MATERIAL	PART NO. 6697	NAME	COMPRESSOR
THIRD ANGLE PROJECTION	SCALE 1:1	MODEL	SD5H14FL6697
DESIGN BY 邹顺发 01.03.2005	CHECKED BY 高橋正 01.03.2005	APPROVED BY 高橋正 03.01.2005	DRAWING NO. 6697-6000S
REVISION RECORD		BY	DATE