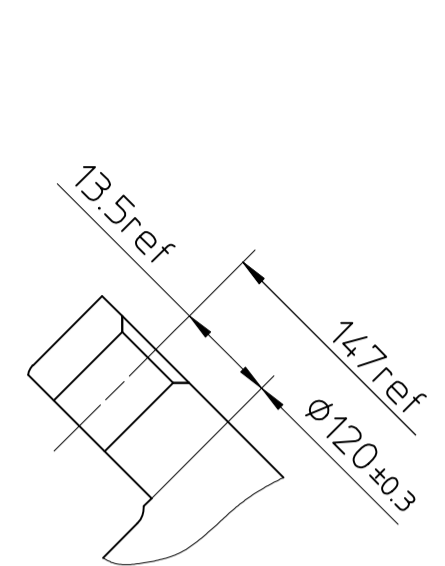
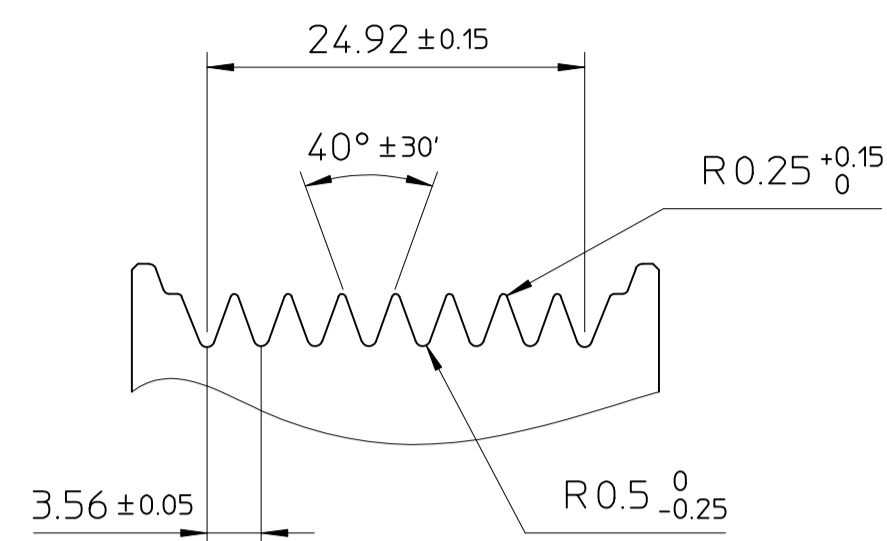


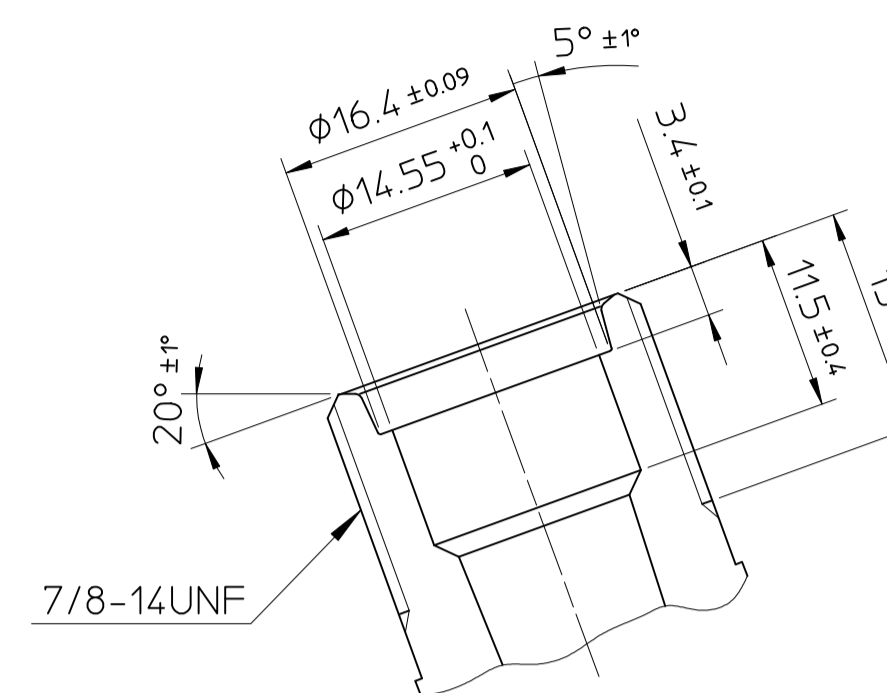
PARTIAL SECT. A-A



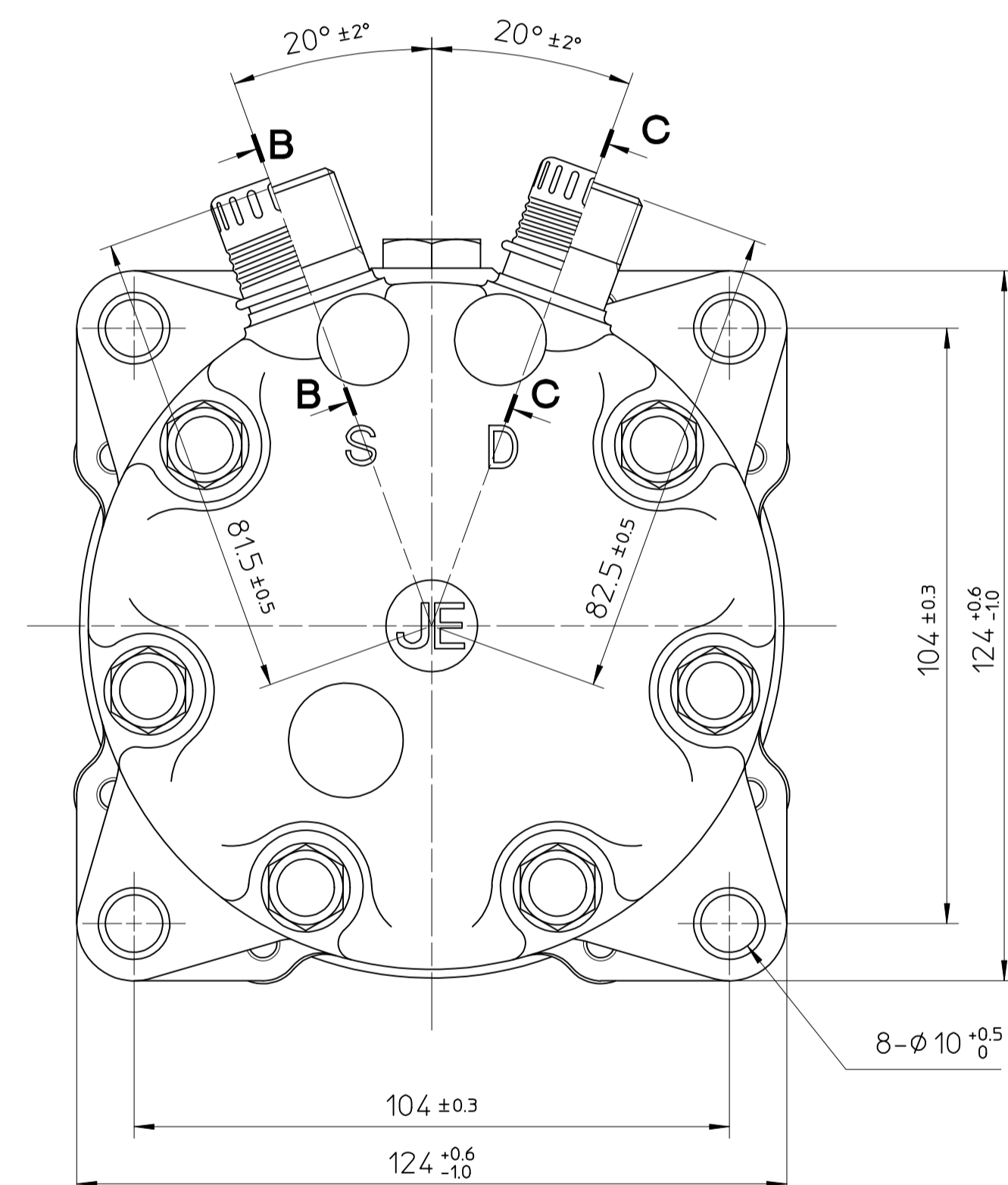
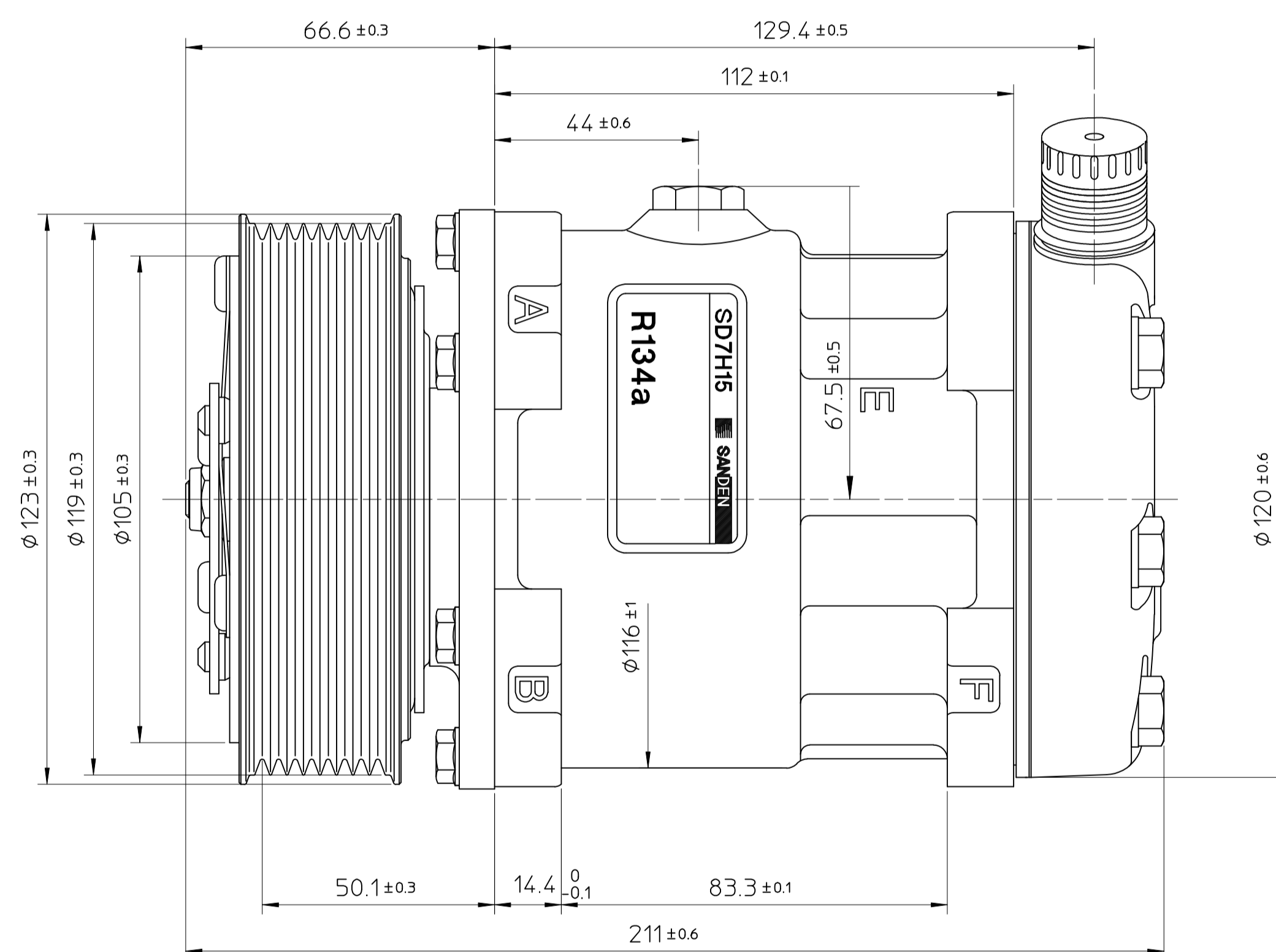
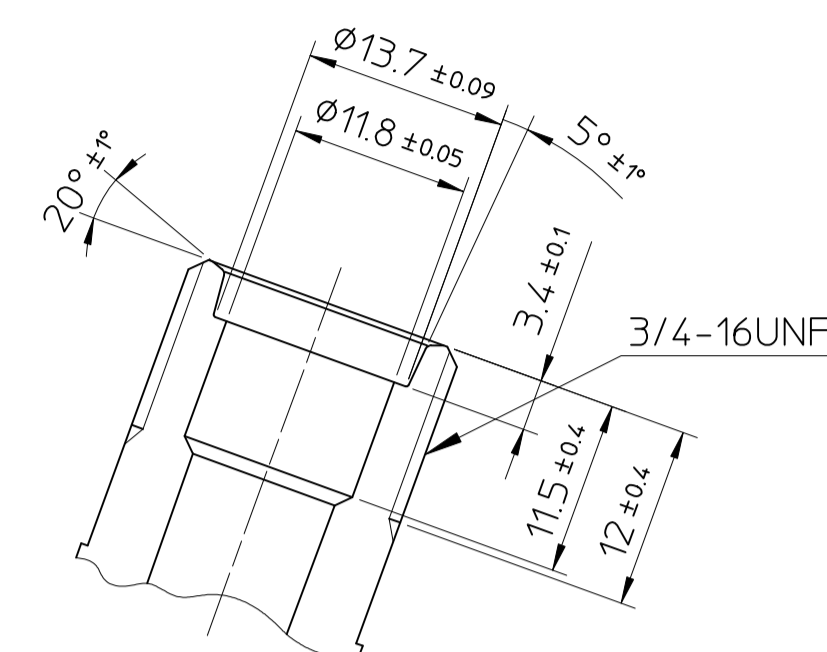
DETAIL OF ROTOR GROOVE (2:1)



PARTIAL SECT. B-B (2:1)



PARTIAL SECT. C-C (2:1)



COMPRESSOR SPECIFICATIONS

BORE	$\phi 29.3$ mm
STROKE	32.8 mm
NUMBER OF CYLINDERS	7
DISPLACEMENT PER REVOLUTION	154.9 cc/rev.
MAXIMUM ALLOWABLE CONTINUOUS SPEED	6000 r.p.m.
MAXIMUM DOWNSHIFT SPEED	7000 r.p.m.
REFRIGERANT	R-134a
OIL	SP-10 OR EQUIV.
OIL CHARGE	135 cc
ROTATION	CLOCKWISE
WEIGHT	kg

CLUTCH SPECIFICATIONS

RATED VOLTAGE	DC 24 V
MINIMUM BREAKAWAY TORQUE	3.5 kg·m
MINIMUM ENGAGEMENT VOLTAGE	16 V
MAXIMUM POWER CONSUMPTION	42 W
MAXIMUM ALLOWABLE CONTINUOUS SPEED	6000 r.p.m.
MAXIMUM DOWNSHIFT SPEED	7000 r.p.m.
BELT TYPE	PV TYPE
PULLEY DIAMETER	$\phi 119$ mm
WEIGHT	kg

NO.	REVISION RECORD	BY	DATE	MATERIAL	PART NO.	NAME
				THIRD ANGLE PROJECTION	SCALE 1:1	COMPRESSOR
				DESIGNED BY Y.Aoyama	DATE 12_Mar_1999	MODEL SD7H15JE8086
				CHECKED BY Y.Uchiyama	DATE 12_Mar_1999	DRAWING NO. 8086 - 6000
				APPROVED BY H.Chiyoda	DATE 12_Mar_1999	