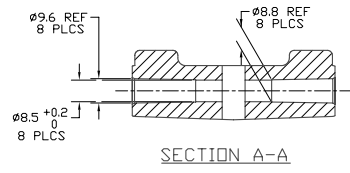
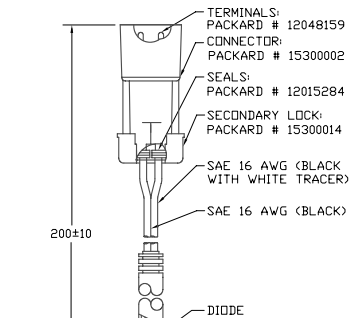
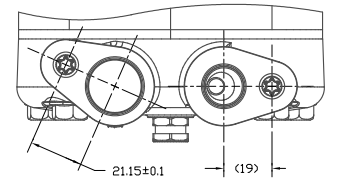
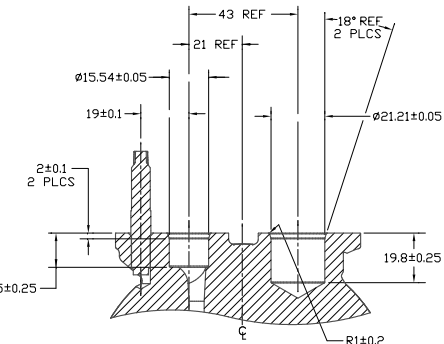
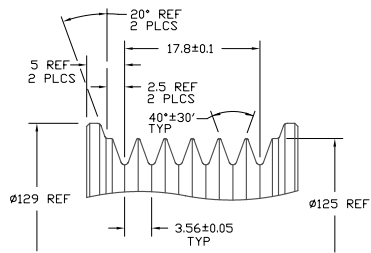
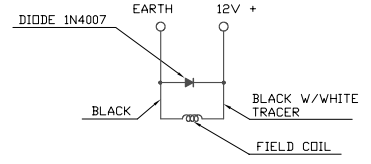
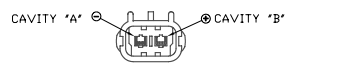


16 | 15 | 14 | 13 | 12 | 11 | 10 | 9 | 8 | 7 | 6 | 5 | 4 | 3 | 2 | 1

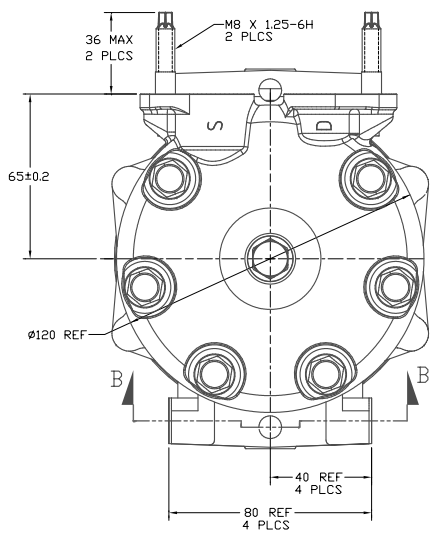
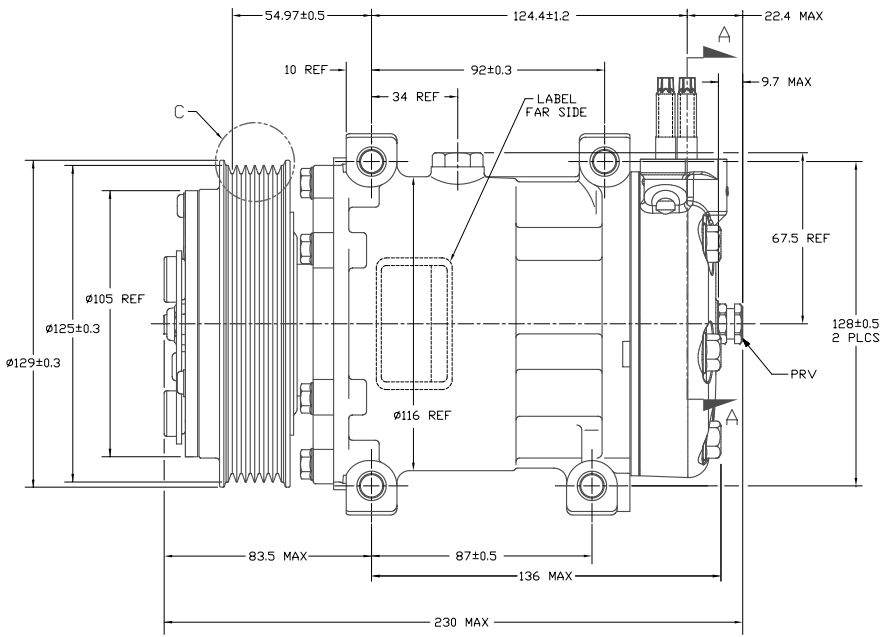
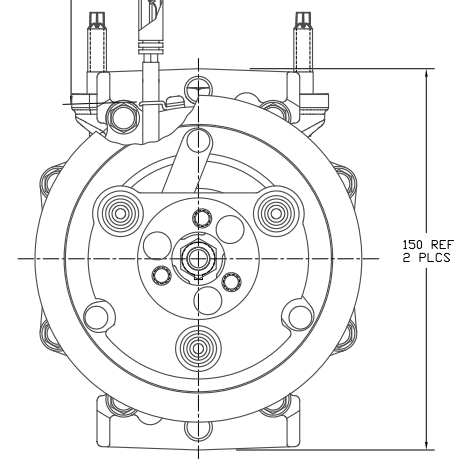
PRCN	REV	APPV	DATE	REVISIONS	DWN	DSGN	CHK	APPV
				INITIAL RELEASE				



SECTION A-A

DETAIL C
SCALE 3:1

SECTION A-A
SECTION SHOWN WITH SHIPPING PAD REMOVED



COMPRESSOR SPECIFICATIONS (REF)

DISPLACEMENT PER REVOLUTION	154.9 cc / rev. (9.5cu.in. / rev.)
MAXIMUM ALLOWABLE R.P.M.	8000 R.P.M.
MAXIMUM ALLOWABLE CONTINUOUS R.P.M.	6000 R.P.M.
REFRIGERANT	R134a
OIL (SP-15)	300±10cc (10.1 fl.oz.)

CLUTCH SPECIFICATIONS (REF)

RATED VOLTAGE	DC 12V
BREAKAWAY TORQUE	3.5 kgf-m min. @ 12V
MINIMUM ENGAGEMENT VOLTAGE	7.5V @ AIR GAP 0.6mm
POWER CONSUMPTION	49 watts max.
BELT TYPE	PV6 TYPE
MAXIMUM ALLOWABLE BELT TENSION	120 kgf
PULLEY DIAMETER	125 mm (4.92 in.)
CLUTCH TYPE	HEAVY DUTY

REV. LEVEL	RELEASED FOR PRODUCTION	DESIGN	DATE	APPV.	DATE	DESIGN	DATE	APPV.
A	Alferdo Arredondo	J Sokolowski	4/5/96	MB	4/5/96	Dennis Lee 2/2/96	1:1	1:1
A	Alferdo Arredondo	Alferdo Arredondo	4/5/96	MB	4/5/96			
A	Alferdo Arredondo	Alferdo Arredondo	4/5/96	MB	4/5/96			

SANDEN
SANDEN INTERNATIONAL (U.S.A.), INC.

SCALE REF: 1:1
PLOTTER SCALE REF: 1:1
METRIC

This drawing and the information contained herein are CONFIDENTIAL and PROPRIETARY to Sanden International (U.S.A.), Inc. and shall not be used, copied, or disclosed to others without the written permission of Sanden International (U.S.A.), Inc.

INTERPRETATION OF THIS DRAWING PER ASME Y14.5M-1994

THIRD ANGLE PROJECTION
DD NOT SCALE

MATERIAL: _____

NAME: _____

COMPRESSOR

DWG. NO. 4803-6000
REV. A

16 | 15 | 14 | 13 | 12 | 11 | 10 | 9 | 8 | 7 | 6 | 5 | 4 | 3 | 2 | 1