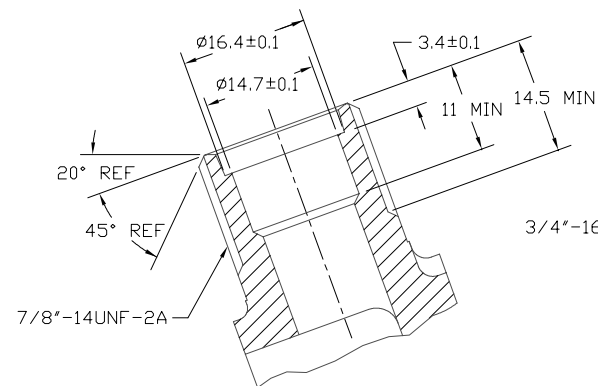
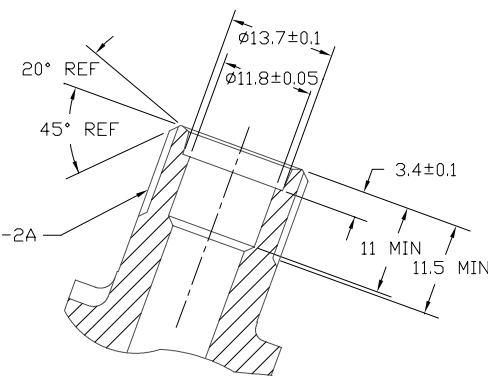


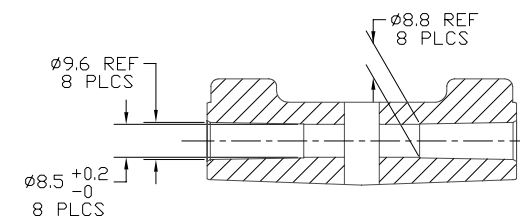
DETAIL C
 SCALE: 3:1



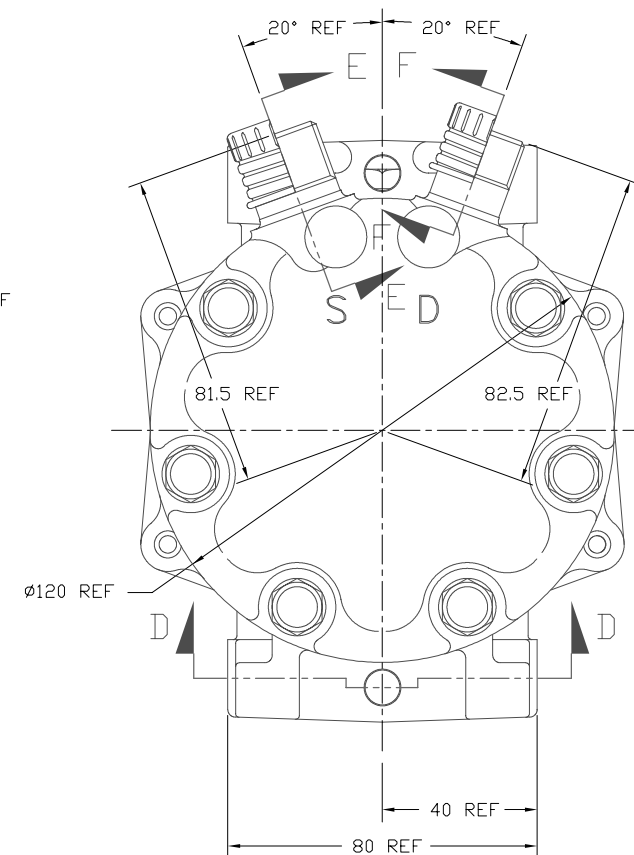
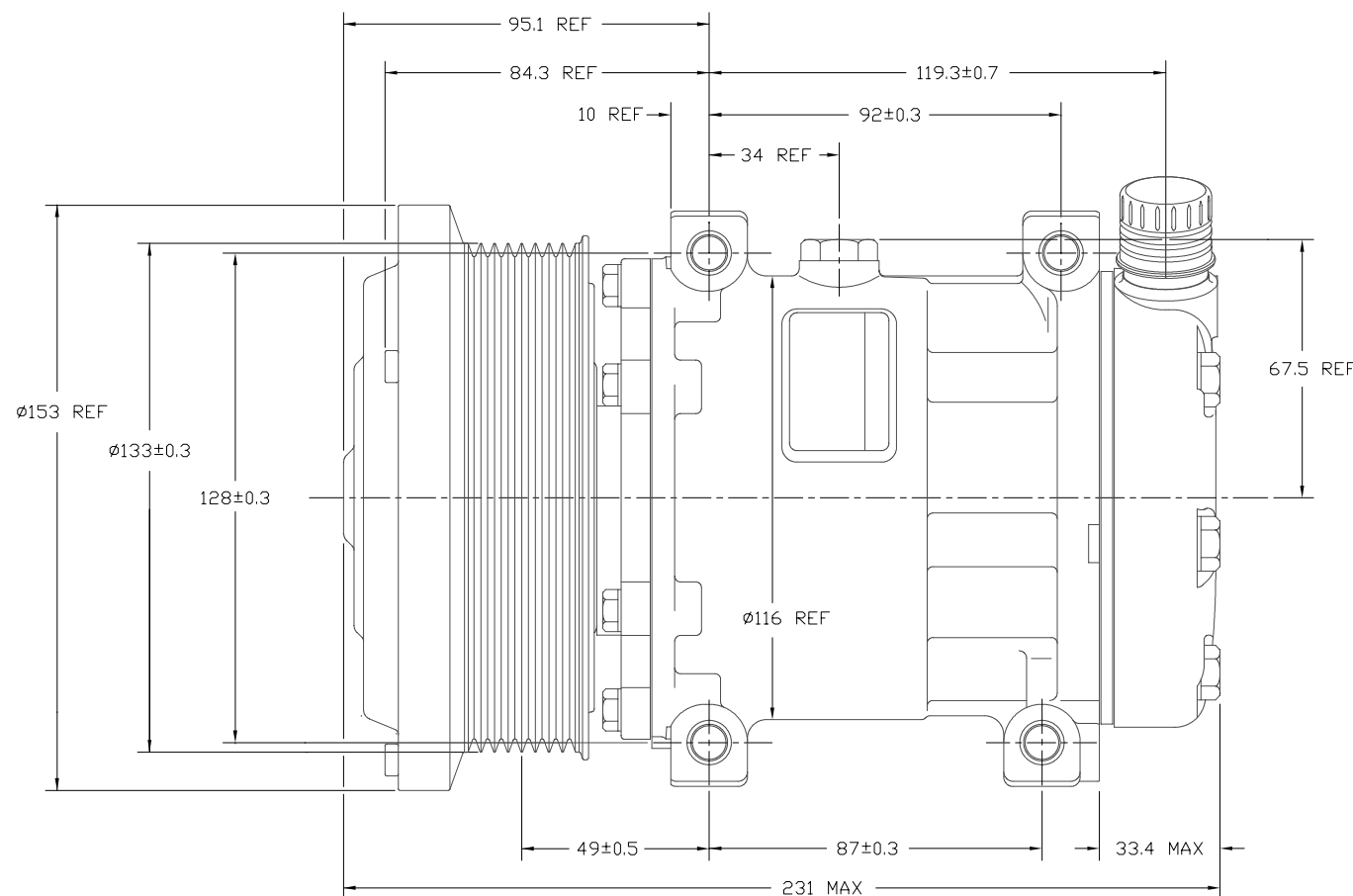
SECTION E-E
 SCALE: 2:1
 (SECTION SHOWN WITH SEAL CAP REMOVED)



SECTION F-F
 SCALE: 2:1
 (SECTION SHOWN WITH SEAL CAP REMOVED)



SECTION D-D



COMPRESSOR SPECIFICATIONS

DISPLACEMENT PER REVOLUTION	154.9 cc / rev. (9.5cu.in. / rev.)
MAXIMUM ALLOWABLE R.P.M.	4000 R.P.M.
MAXIMUM ALLOWABLE CONTINUOUS R.P.M.	4000 R.P.M.
REFRIGERANT	R134a
OIL (SP-15)	300 cc (10.1 fl.oz.)
WEIGHT	7.4 kg (16.4 lb.)

CLUTCH SPECIFICATIONS

RATED VOLTAGE	DC 12V
BREAKAWAY TORQUE	3.5 kgf-m min. @ 12V
MINIMUM ENGAGEMENT VOLTAGE	7.5V @ AIR GAP 0.6mm REF
POWER CONSUMPTION	43 watts max.
BELT TYPE	PV8 TYPE
MAXIMUM ALLOWABLE BELT TENSION	120 kgf
PULLEY DIAMETER	Ø133 mm (5.2 in.)
CLUTCH TYPE	SEALED HEAVY DUTY

REV. LEVEL	RELEASED FOR: ENGG DEVELOPMENT	<p>SANDEN INTERNATIONAL (U.S.A.), INC.</p>	<p>SCALE REF 1:1 PLOTTED SCALE REF 1:1 METRIC</p>
A	<p>DSGN: Dennis Lee 01/01/95</p> <p>CHK: Robert Klug 01/01/95</p> <p>APPV: D. Dobbie/Rob K 01/01/95</p> <p>DATE: 01/01/95</p>		
REV. LEVEL	RELEASED FOR: DESIGN VALIDATION	<p>INTERPRETATION OF THIS DRAWING PER ASME Y14.5M-1994</p>	<p>THIRD ANGLE PROJECTION</p>
A	<p>DSGN: Dennis Lee 01/01/95</p> <p>APPV: D. Dobbie/Rob K 01/01/95</p> <p>DATE: 01/01/95</p>		
REV. LEVEL	RELEASED FOR: PRODUCTION VAL'D.	<p>MATERIAL: -</p>	<p>NAME: COMPRESSOR</p>
A	<p>DSGN: Dennis Lee 01/01/95</p> <p>APPV: D. Dobbie/Rob K 01/01/95</p> <p>DATE: 01/01/95</p>		
REV. LEVEL	RELEASED FOR: PRODUCTION	<p>DWG. NO. 4698-6000</p>	<p>REV. D</p>
A	<p>DSGN: Dennis Lee 01/01/95</p> <p>APPV: D. Dobbie/Rob K 01/01/95</p> <p>DATE: 01/01/95</p>		

DO NOT SCALE