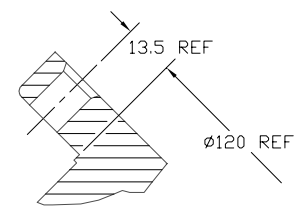
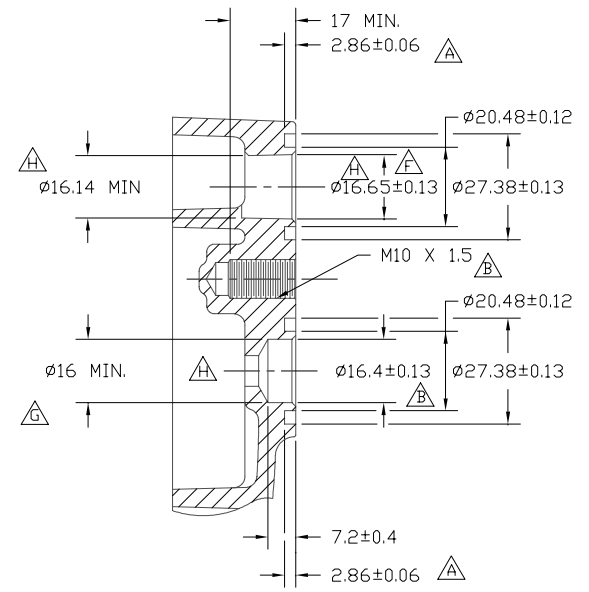


MOUNTING WINDOW

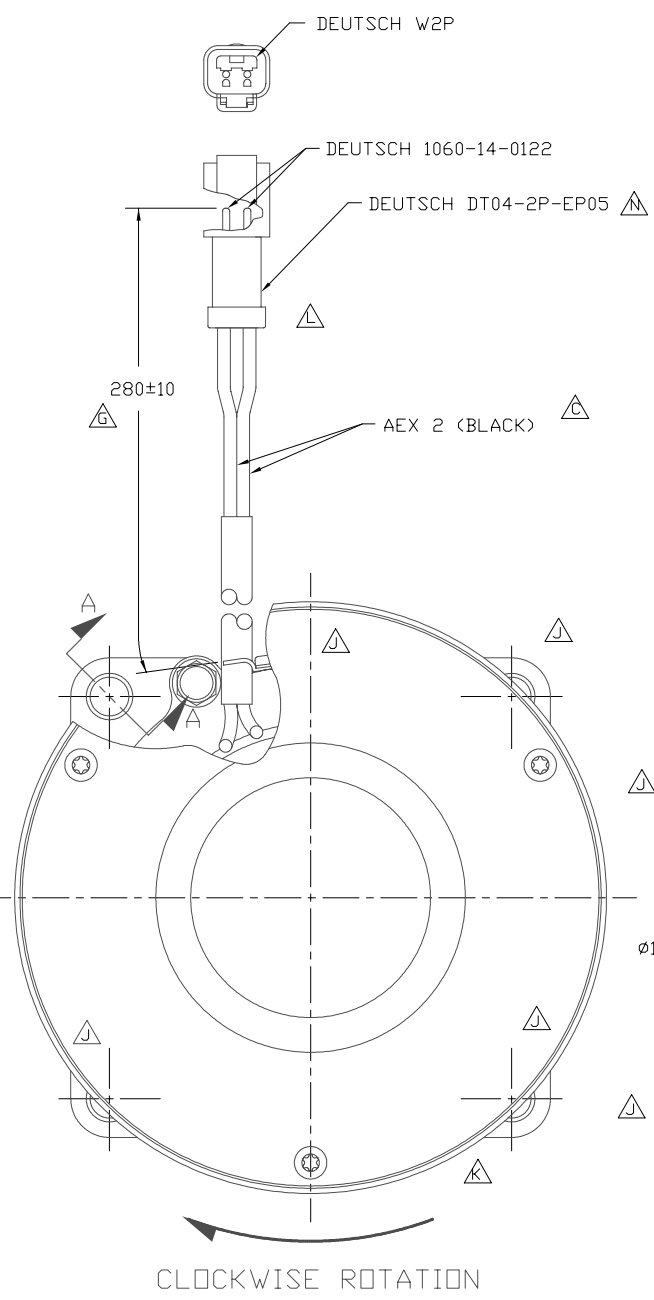


SECTION A-A

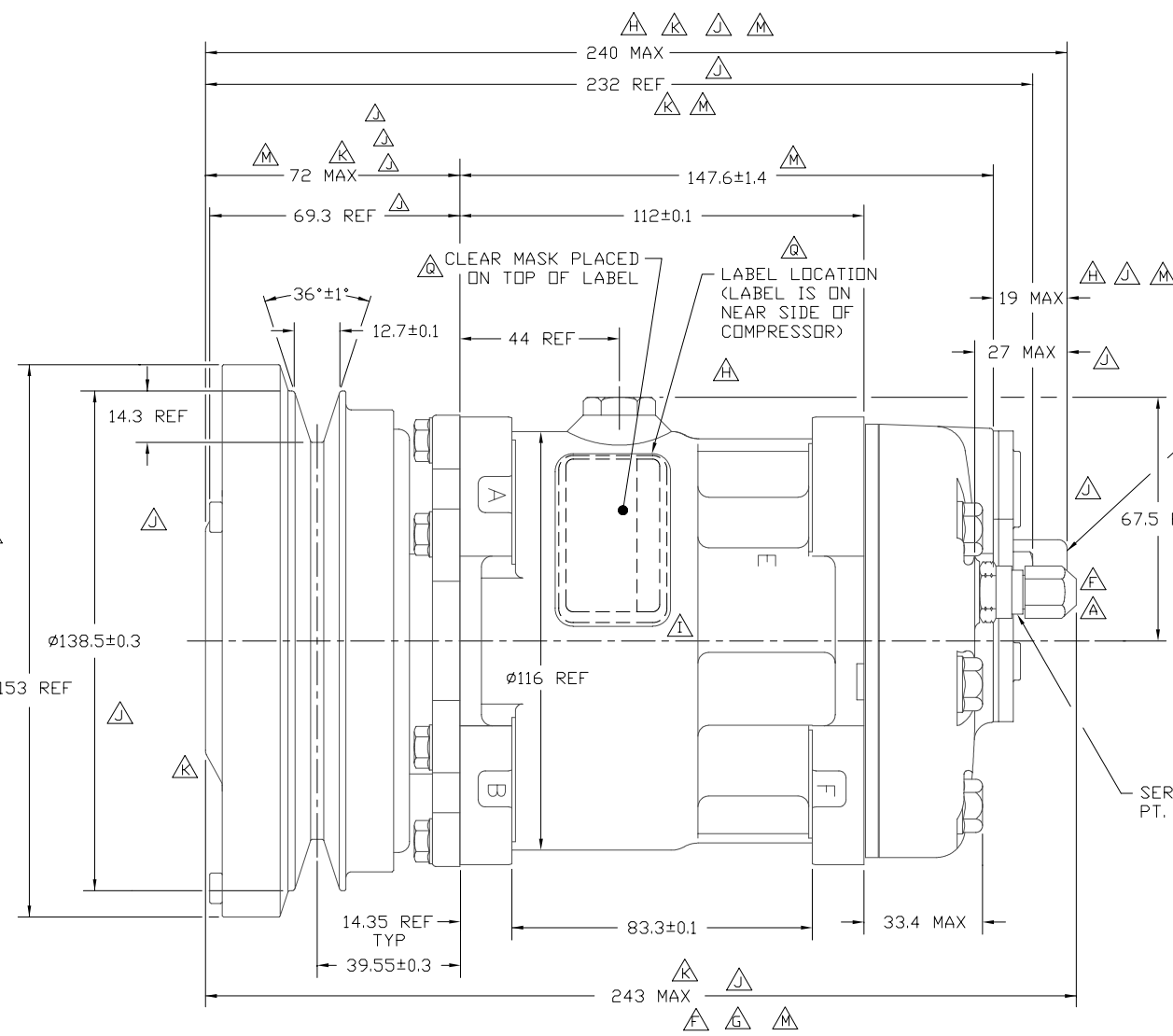


SECTION E-E

(SECTION WITH O-RINGS, SHIPPING PAD ASSEMBLY, AND BOLT REMOVED)



CLOCKWISE ROTATION



PRV OPERATING PRESSURE: 500-600 PSIG

SERVICE VALVE PT. NO. 4604-0590

10 +0.5 -0 8 PLCS

PDEN. NO.	REV.	DATE	REVISIONS	DWN	DSGN	CHK	APPV
608	A	10/30/91	O-RING GROOVE DEPTH TOL. MOVED PRV, ADDED SRVC VLV				
SC96	B	11/12/91	DISCH. PILOT HOLE Ø16.4±0.13 WAS Ø15.2 +0.15 -0.0. CYL. HEAD PAD BOLT FROM M10 X 1.25 TO M10 X 1.5.	EMA	EMA	DT	BRH
SC101	C	12/5/91	CHANGED LEAD WIRE FROM GREEN TO BLACK	RH	EMA	EMA	
Ø72	A	9/14/92	CHG. 4608-6000 WAS SMD-Ø54; SP-20 WAS SMD-Ø24; 300cc (10.1 fl.oz.) WAS 240cc (8.1 fl.oz.); 60kgf WAS 50 kgf; 3.5 kg-m MIN. @ 12V WAS 3.3 kg-m MIN. @ 12V. ADD: WEIGHT 7.4 kg (16.4 lb); 43 watts max.	DRL	DRL	EMA	JB
968	A	11/11/92	ADD: SERVICE VALVE PT. NO. 4604-0590	DRL	DRL	DME	JB
93157	A	6/18/93	MODIFIED SERVICE VALVE. CHANGED R234a WAS Ø124a) 4000 R.P.M. WAS 6000 R.P.M.; Ø16.3±0.2 WAS Ø16.5±0.13. ADDED DIMENSION 241 REF; CLUTCH TYPE AND Ø9 HOLE.	PW	PW	DRL	EMA
93259	A	8/18/93	ADDED MIN. DRAFT DIA. AT DISCHARGE PORT AND RE-DIMENSIONED PRV LOCATION. RE-DIMENSIONED LEAD WIRE. CHANGED 241 REF TO 242 MAX.	RH	D.T.	DRL	EMA
93286	A	10/27/93	ADDED PRV SETTINGS; CUSTOMER PART NUMBER. DELETED VIEW B. CHANGED 241 MAX WAS 240.4 REF; 22.9 MAX WAS 22.89 MAX.	PW	PW	DRL	EMA
93345	A		CHANGED SUCTION PORT TO REFLECT CASTING. DELETED CHAMFER ON INSIDE OF CYL. HEAD DIS. PORT.				
94086	A	4/11/94	ADDED CLEAR PRE-MASKED LABEL	RH	EMA	DRL	EMA
93214	A		CHANGED ARMATURE DUST COVER BOLTS FROM HEX TYPE TO TORX TYPE.				
95068	A	10/30/95	ELIMINATED 3 DUST COVER BOLTS. REVISED TO CURRENT SPEC.	TG	DRL	DAO	EMA
95390	A		CHANGED ARMATURE DUST COVER.				
94103	A		ADDED PRV DUST COVER.				
96101A	A	12/3/96	CHANGED TO DUST SHIELD # 4604-2050 AND CORRECTED DIMS.	RH	CBA	DRL	EMA
96393	A	12/13/96	CHANGED COIL WINDING TO 0670-6440	RH	DD	DRL	EMA
97030	A		CHANGED CUSTOMER P/N WAS 2E1907. ADDED 22 REF DIM. (2 PLCS.)	RH			
97219	A	7/18/97	240 MAX WAS 241 MAX. 72 MAX WAS 71 MAX. 147.6±1.4 WAS 147.4±0.8. 19 MAX WAS 21 MAX. 232 REF WAS 229 REF. 243 MAX WAS 242 MAX.	MH	DD	DRL	EMA
99411	A	7/18/97	DEUTSCH DT04-2P-EP05 WAS DEUTSCH DT04-2P-EP04	DKC	HF	DRL	HT
2001340 99007	A	11/12/01	OIL (SP-15) WAS OIL (SP-20) UPDATED BORDER	DKC	LK	DRL	MY
2006233	A	09/21/06	ADDED: LABEL LOCATION. (LABEL IS ON NEAR SIDE OF COMPRESSOR). CLEAR MASK PLACED ON TOP OF LABEL	RSR	MK	DRL	EMA

COMPRESSOR SPECIFICATIONS (REF)

DISPLACEMENT PER REVOLUTION	154.9 cc / rev. ( 9.5cu.in. / rev. )
MAXIMUM ALLOWABLE R.P.M.	4000 R.P.M.
MAXIMUM ALLOWABLE CONTINUOUS R.P.M.	4000 R.P.M.
REFRIGERANT	R134a
OIL ( SP-15 )	300 cc ( 10.1 fl.oz. )
WEIGHT	7.4 kg ( 16.4 lb. )
CUSTOMER PART NUMBER	3E1908

CLUTCH SPECIFICATIONS (REF)

RATED VOLTAGE	DC 12V
BREAKAWAY TORQUE	3.5 kgf-m min. @ 12V
MINIMUM ENGAGEMENT VOLTAGE	7.5V @ AIR GAP 0.6mm
POWER CONSUMPTION	43 watts max.
BELT TYPE	A TYPE
MAXIMUM ALLOWABLE BELT TENSION	60 kgf
PULLEY DIAMETER	Ø138.5mm ( 5.453 in. )
CLUTCH TYPE	SEALED HEAVY DUTY

REV. LEVEL A DSN DENNIS LEE 3/13/91 APPV. B.R. HAUSER 3/13/91 DATE J BAYYDUK 3/11/91	<b>SANDEN</b> SANDEN INTERNATIONAL ( U.S.A. ), INC. DRAWN SCALE REF 1:1 PLOTTED SCALE REF 1:1 METRIC This drawing and the information contained hereon are CONFIDENTIAL and PROPRIETARY to Sanden International (U.S.A.), Inc., and are received in CONFIDENCE and shall not be used, copied, or disclosed to others without the written permission of Sanden International (U.S.A.), Inc.
REV. LEVEL A DSN DENNIS LEE 3/13/91 APPV. B.R. HAUSER 3/13/91 DATE J BAYYDUK 3/11/91	INTERPRETATION OF THIS DRAWING PER ASME Y14.5M-1994 THIRD ANGLE PROJECTION 
REV. LEVEL A DSN DENNIS LEE 3/13/91 APPV. B.R. HAUSER 3/13/91 DATE J BAYYDUK 3/11/91	MATERIAL: NAME SD7H15GK4608 COMPRESSOR
REV. LEVEL A DSN DENNIS LEE 3/13/91 APPV. B.R. HAUSER 3/13/91 DATE J BAYYDUK 3/11/91	DWG. NO. 4608-6000 REV. Q

DO NOT SCALE