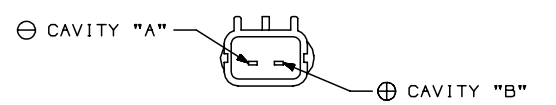
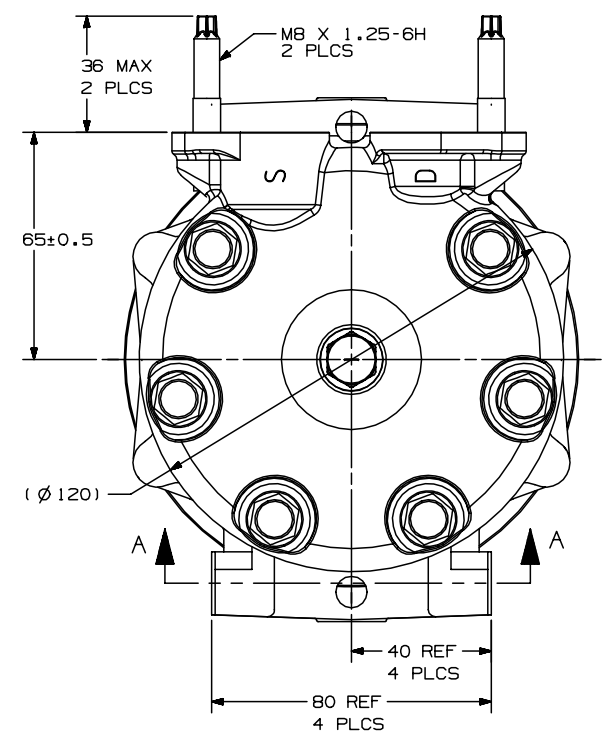
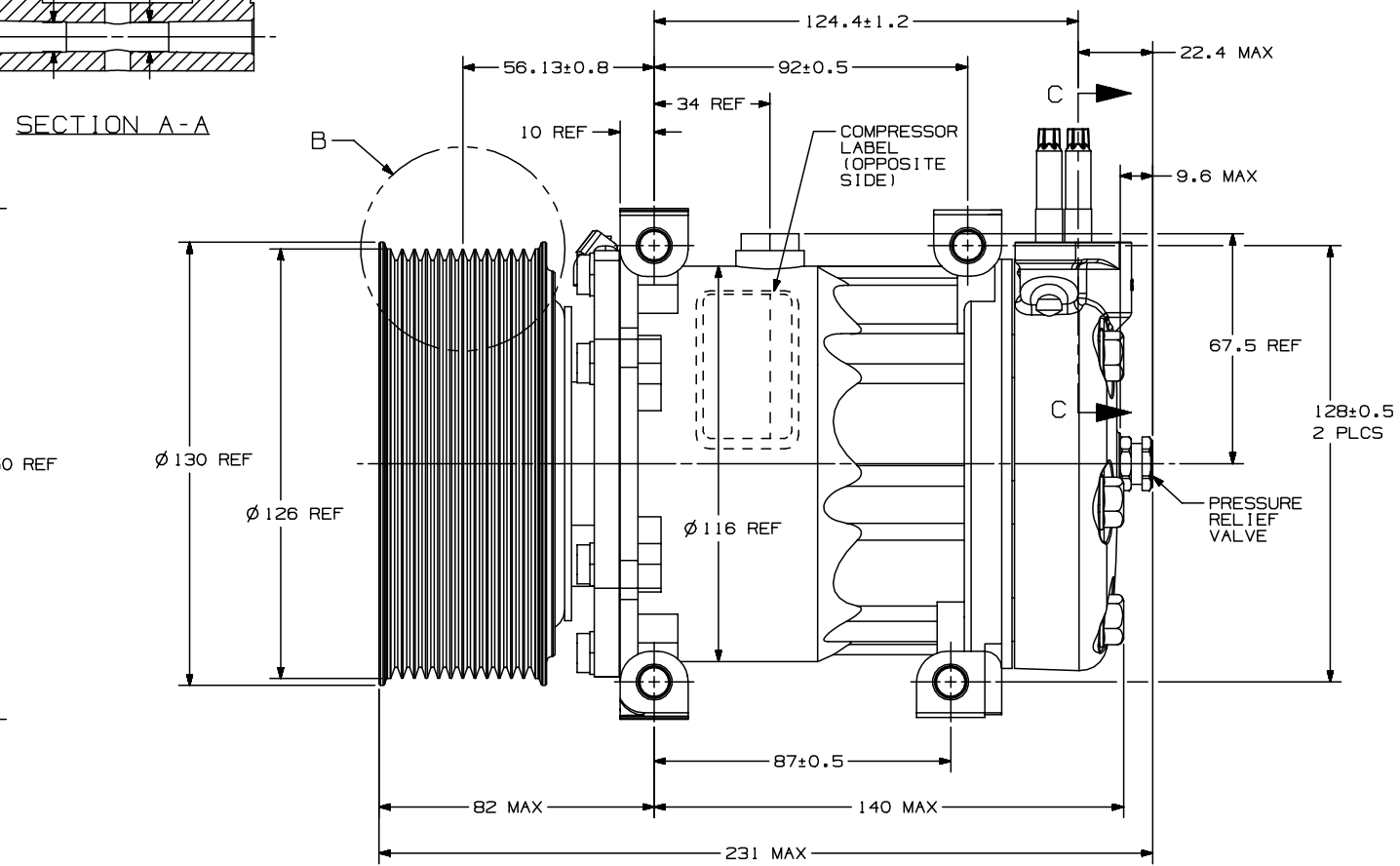
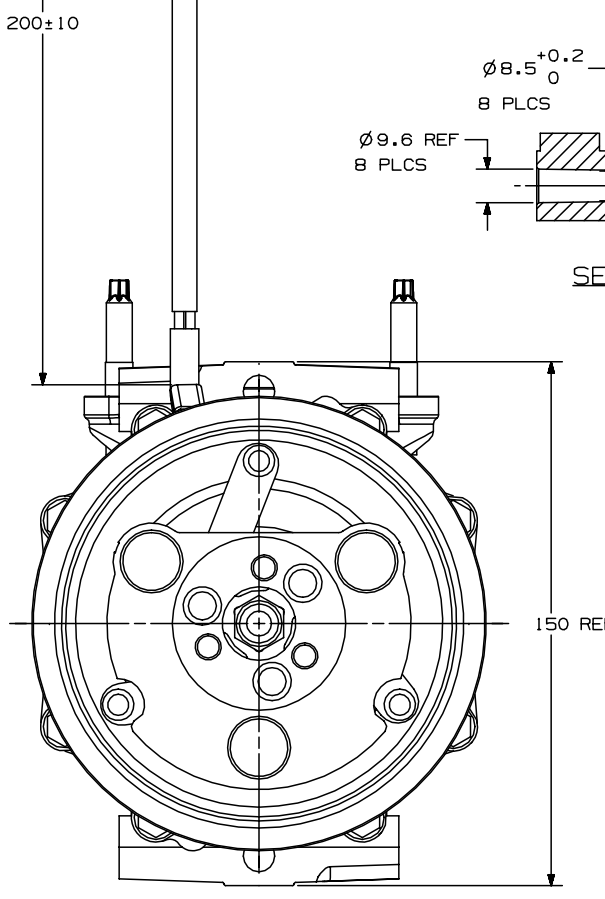
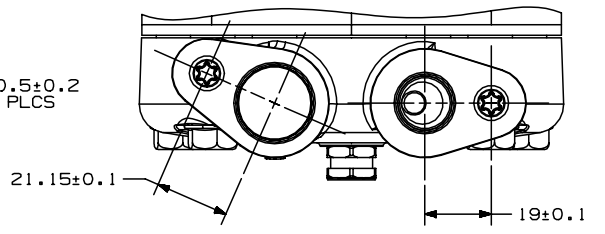
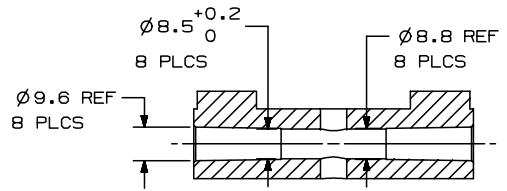
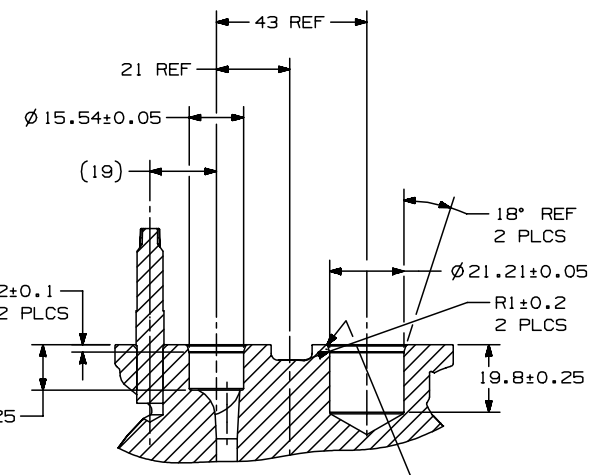
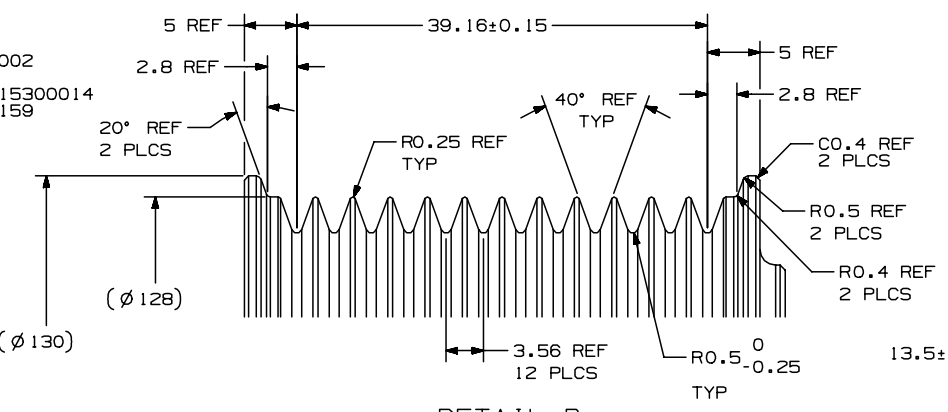


PCDN	REV.	APPLY DATE	REVISIONS	DWN	DSGN	CHK	APPV
			INITIAL ISSUE				



CONNECTOR: PACKARD #15300002
 SEALS: PACKARD #12015284
 SECONDARY LOCK: PACKARD #15300014
 TERMINALS: PACKARD #12048159

SAE 16 AWG (BLACK)
 SAE 16 AWG (RED)

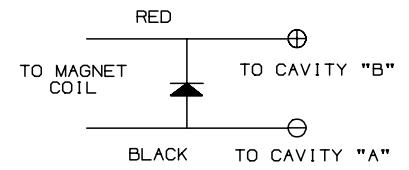


COMPRESSOR SPECIFICATIONS (REF)

DISPLACEMENT PER REVOLUTION	154.9 cc/rev. (9.5cu.in./rev.)
MAXIMUM ALLOWABLE R.P.M.	8000 R.P.M.
MAXIMUM ALLOWABLE CONTINUOUS R.P.M.	6000 R.P.M.
REFRIGERANT	R134a
OIL (SP-15)	300±10 cc (10.1 fl.oz.)

CLUTCH SPECIFICATIONS (REF)

RATED VOLTAGE	DC 12V
BREAKAWAY TORQUE	3.5 kgf·m min. @ 12V
MINIMUM ENGAGEMENT VOLTAGE	7.5V max @ AIR GAP 0.6mm
POWER CONSUMPTION	49 watts max.
BELT TYPE	PV12 TYPE
MAXIMUM ALLOWABLE BELT TENSION	120 kgf
PULLEY DIAMETER	Ø126 mm (4.96 in.)
CLUTCH TYPE	HEAVY DUTY



DIODE POLARITY

DO NOT SCALE

REV. LEVEL	RELEASED FOR PRODUCTION	<p>SANDEN INTERNATIONAL (U.S.A.), INC.</p>	DRWN	C. Wolff	SCALE REF	1:1	PLOTTED SCALE REF	1:1	METRIC
DESIGN	C. Wolff		CHK	R. Rodriguez	DATE	10/28/08	APPV.	NB for EMA	<small>This drawing and the information contained herein are CONFIDENTIAL and PROPRIETARY to Sanden International (U.S.A.), Inc., and shall not be used, copied, or disclosed to others without the written permission of Sanden International (U.S.A.), Inc.</small>
DESIGN VALIDATION	C. Wolff	INTERPRETATION OF THIS DRAWING PER	ASME Y14.5M-1994		THIRD ANGLE PROJECTION	SIZE	D		
RELEASED FOR PRODUCTION	C. Wolff	MATERIALS			NAME	COMPRESSOR			
DATE	10/28/08	DWG. NO.	4541-6000		REV	A			