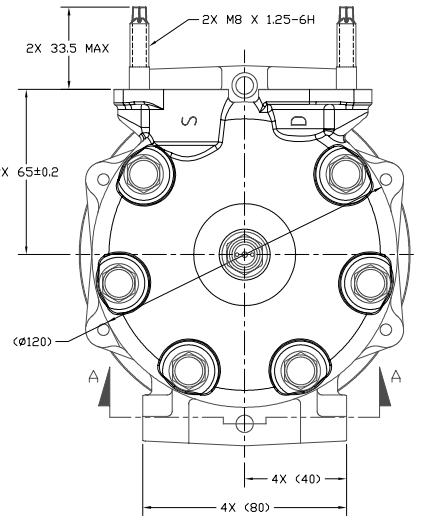
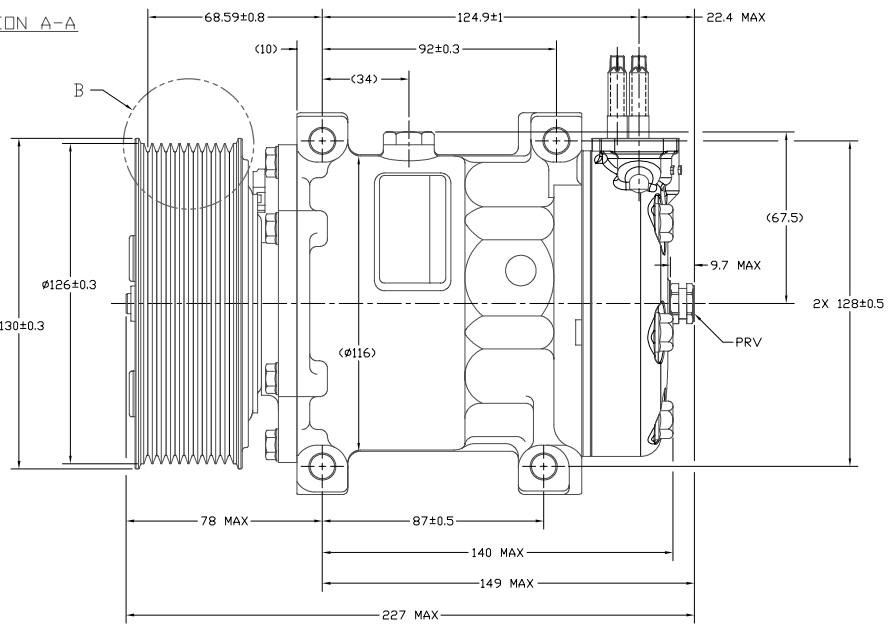
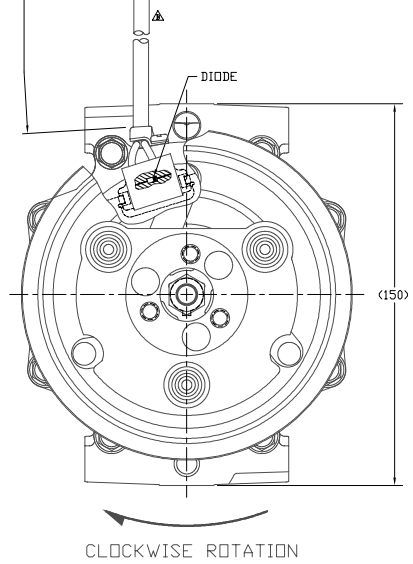
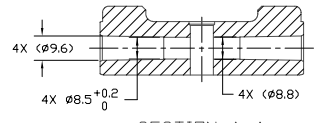
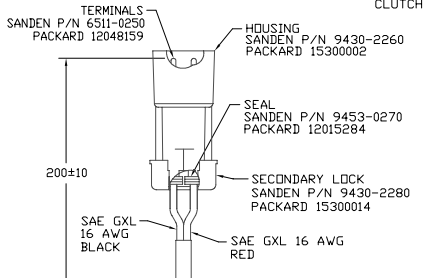
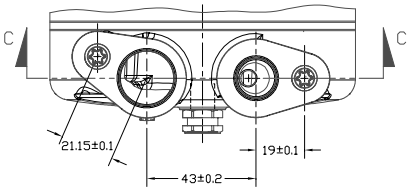
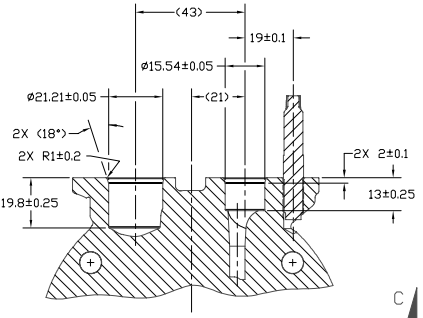
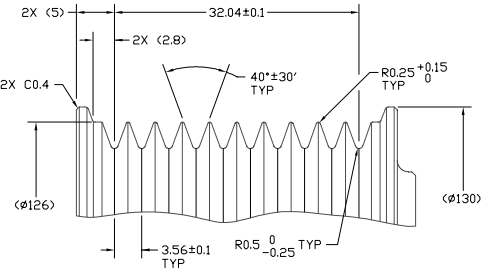
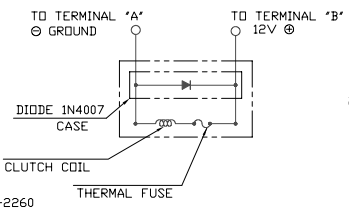
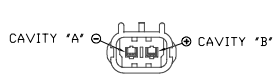


PCDN	REV	APPV	REVISIONS	BYN	ESGN	CHK	APPV
2006305		10/15/06	INITIAL ISSUE	JS	HF	DRL	YN
			CEL WINDING 6800-6840 WAS 0463-6840				



COMPRESSOR SPECIFICATIONS (REF)

DISPLACEMENT PER REVOLUTION	154.9 cc / rev. (9.5cuin. / rev.)
MAXIMUM ALLOWABLE R.P.M.	8000 R.P.M.
MAXIMUM ALLOWABLE CONTINUOUS R.P.M.	6000 R.P.M.
REFRIGERANT	R134a
OIL (SP-15)	300±10cc (10.1 fl.oz.)

CLUTCH SPECIFICATIONS (REF)

RATED VOLTAGE	DC 12V
BREAKAWAY TORQUE	3.5 kgf-m min. @ 12V
MINIMUM ENGAGEMENT VOLTAGE	7.5V @ AIR GAP 0.6mm
POWER CONSUMPTION	49 watts max.
BELT TYPE	PV10 TYPE
MAXIMUM ALLOWABLE BELT TENSION	120 kgf
PULLEY DIAMETER	Ø126 mm (4.96 in.)
CLUTCH TYPE	HEAVY DUTY

SANDEN
SPECIAL INTERNATIONAL PULLEY FOR

REV. LEVEL: RELEASED FOR DESIGN VALIDATION
 DRAWN: C. Wolff
 CHECKED: R. Rodriguez
 DATE: 09/08/06

REV. LEVEL: DESIGN VALIDATION
 DRAWN: C. Wolff
 CHECKED: R. Rodriguez
 DATE: 10/23/06

REV. LEVEL: RELEASED FOR PRODUCTION VAL. 2
 DRAWN: C. Wolff
 CHECKED: R. Rodriguez
 DATE: 10/23/06

REV. LEVEL: RELEASED FOR PRODUCTION
 DRAWN: C. Wolff
 CHECKED: R. Rodriguez
 DATE: 10/23/06

INTERPRETATION OF THIS DRAWING PER ASME Y14.5M-1994
 THIRD ANGLE PROJECTION
 MATERIAL: -
 NAME: COMPRESSOR
 DWG. NO: 4407-6000
 REV. B

DO NOT SCALE