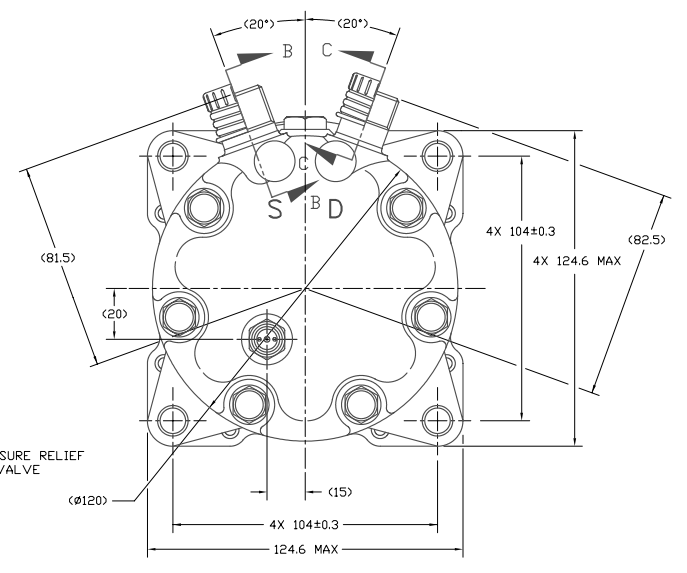
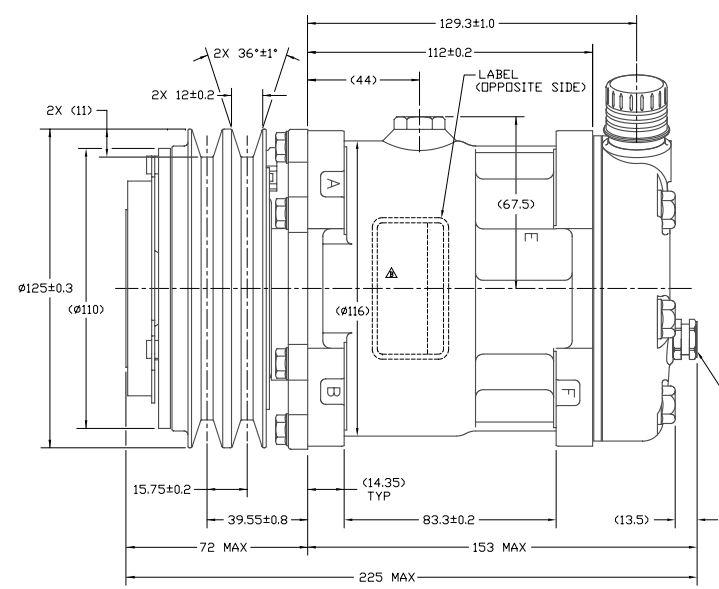
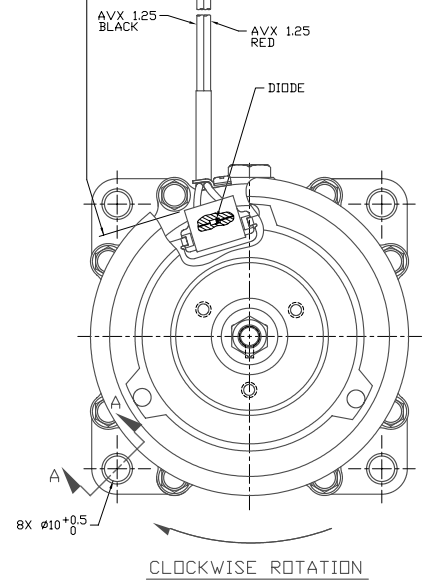
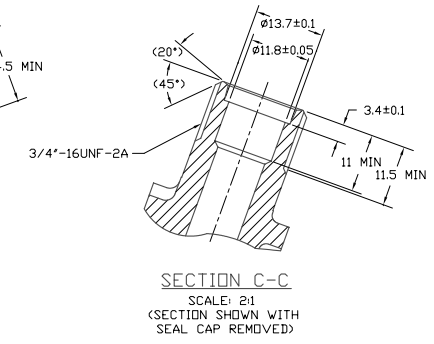
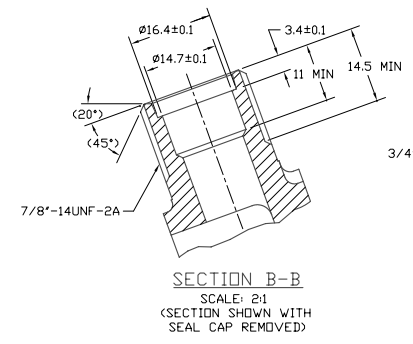
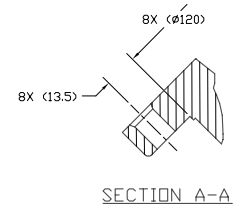
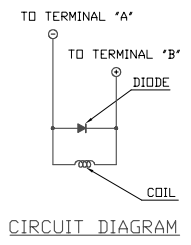
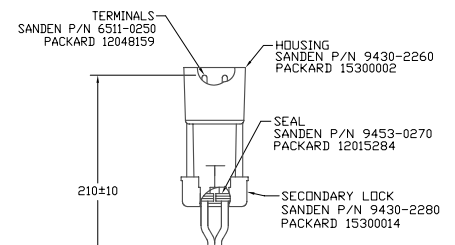
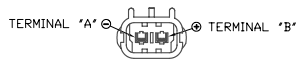


P2CN	REV	APPV	DATE	REVISIONS	DWN	ESGN	CHK	APPV
806687	A		2/6/06	INITIAL ISSUE REF DRAWING 4393-6000 REV. A LABEL POSITION CORRECTED	JS	AA	DRL	JUN



COMPRESSOR SPECIFICATIONS REF.

DISPLACEMENT PER REVOLUTION	1549 cc / rev. (9.5 in. ³ / rev.)
MAXIMUM ALLOWABLE R.P.M.	8000 R.P.M.
MAXIMUM ALLOWABLE CONTINUOUS R.P.M.	6000 R.P.M.
REFRIGERANT	R134a
OIL (SP-15)	300 cc (10.1 fl. oz.)
CUSTOMER PART NUMBER	F69-6003-233

CLUTCH SPECIFICATIONS REF.

RATED VOLTAGE	DC 12V
BREAKAWAY TORQUE	3.5 kgf-m MIN. @ 12V
MINIMUM ENGAGEMENT VOLTAGE	7.5V @ AIR GAP 0.6mm
POWER CONSUMPTION	49 WATTS MAX.
BELT TYPE	A TYPE
MAXIMUM ALLOWABLE BELT TENSION	60 kgF PER BELT
PULLEY DIAMETER	Ø125mm (4.9 in.)
CLUTCH TYPE	HEAVY DUTY

NOTE:

- DIMENSIONS ARE TO VIRTUAL SHARP CORNERS UNLESS OTHERWISE SPECIFIED.
- COMPRESSOR TO BE CHARGED WITH NITROGEN PRIOR TO SHIPPING WITHIN 0.2 TO 1.6 kg/cm².

DO NOT SCALE

REV	LEVEL	RELEASED FOR	DATE	DESCRIPTION
A	DRL	René Martínez	11/7/05	DESIGN DEVELOPMENT
A	DESIGN VALIDATION	René Martínez	11/7/05	DESIGN VALIDATION
A	RELEASED FOR PRODUCTION	René Martínez	11/7/05	RELEASED FOR PRODUCTION

<small>SANDEN INTERNATIONAL (U.S.A.), INC.</small>	
<small>This drawing and the information contained herein are CONFIDENTIAL and PROPRIETARY to Sanden International (U.S.A.), Inc. and shall not be used, copied, or disclosed to others without the written permission of Sanden International (U.S.A.), Inc.</small>	<small>SCALE: REF 1:1 PLOTTED SCALE: REF 1:1 METRIC</small>
<small>INTERPRETATION OF THIS DRAWING PER ASME Y14.5M-1994</small>	<small>THIRD ANGLE PROJECTION</small>
<small>MATERIAL:</small>	<small>SIZE: D</small>
<small>NAME:</small>	COMPRESSOR
<small>DWG. NO.</small>	4392-6000
<small>REV. DATE</small>	<small>REV. B</small>