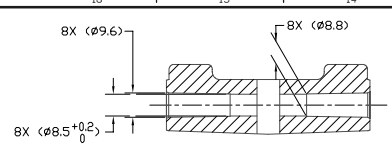
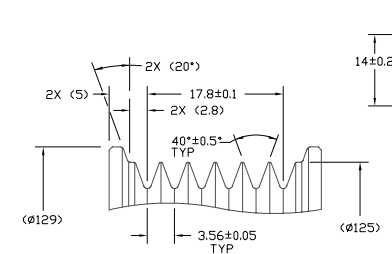


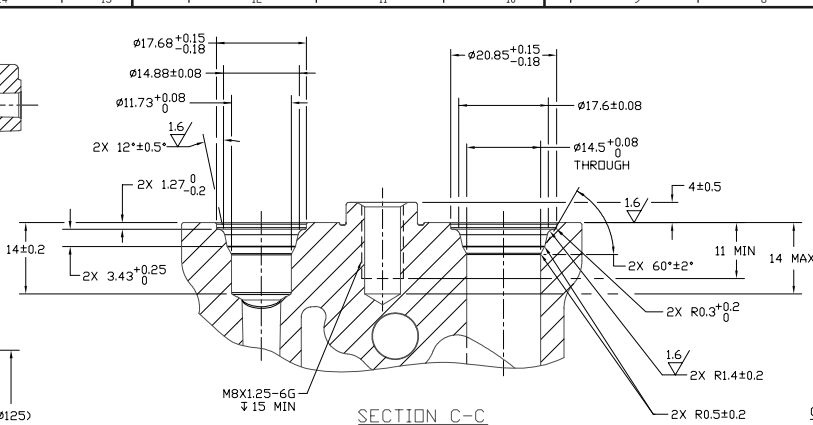
PCDN	REV	APPV DATE	REVISIONS	DRN	ESGN	CHK	APPV
8066364	Δ	10/24/06	INITIAL ISSUE REF. A0780-A-600, REV. A CELL WINDING 6432-6340 "6FZ" WAS 14130-6240 "6E2"	JS	AA	DRL	AA



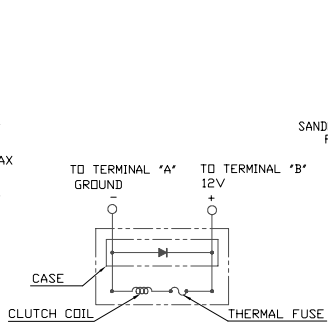
SECTION A-A



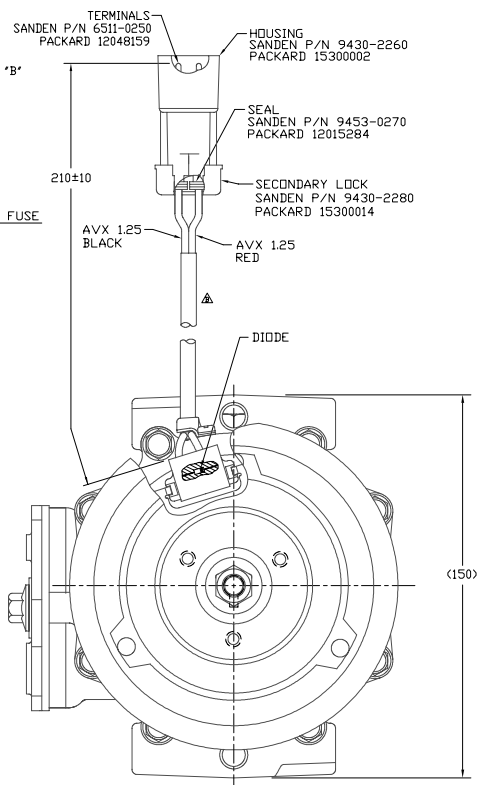
DETAIL B  
SCALE 3/1



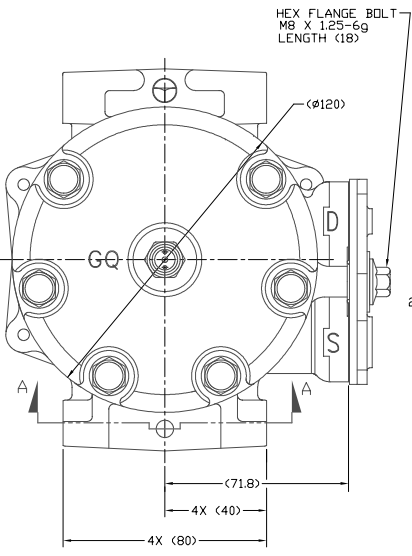
SECTION C-C  
SCALE 2/1  
(SHIPPING PAD AND BOLT REMOVED,  
SECTION ROTATED 90° CCW)



CIRCUIT DIAGRAM Δ  
(FOR REFERENCE)

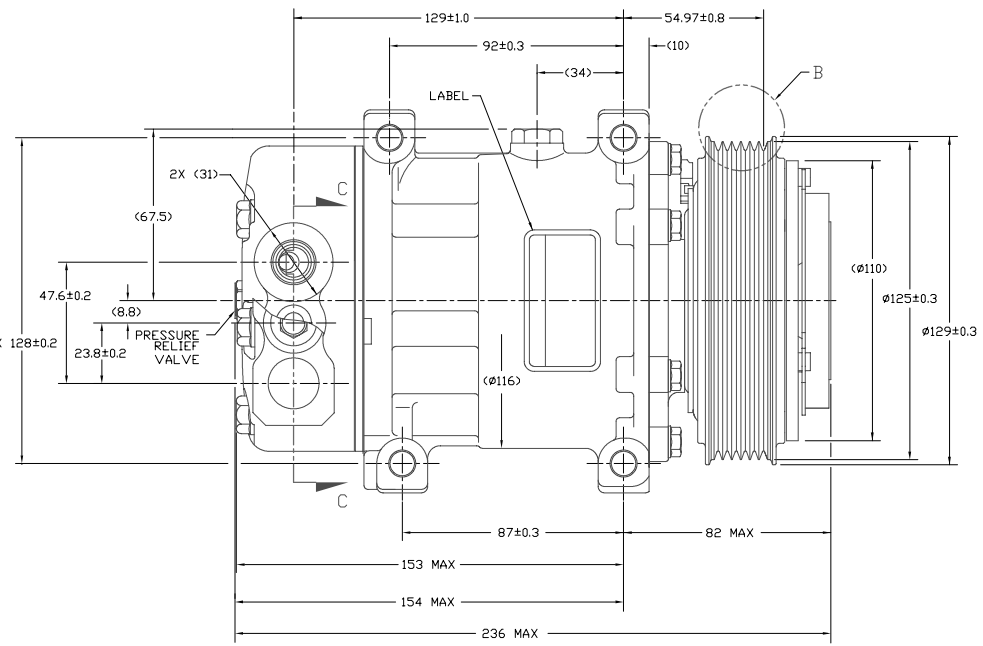


CLOCKWISE ROTATION



COMPRESSOR SPECIFICATIONS REF.

DISPLACEMENT PER REVOLUTION	154.9 cc / rev. ( 9.5cuin. / rev. )
MAXIMUM ALLOWABLE R.P.M.	6000 R.P.M.
MAXIMUM ALLOWABLE CONTINUOUS R.P.M.	4000 R.P.M.
REFRIGERANT	R134a
OIL ( SP-15 )	300 cc ( 10.1 fl.oz. )



CLUTCH SPECIFICATIONS REF.

RATED VOLTAGE	DC 12V
BREAKAWAY TORQUE	3.5 kgf·m min. @ 12V
MINIMUM ENGAGEMENT VOLTAGE	7.5V @ AIR GAP 0.6mm
POWER CONSUMPTION	49 watts max.
BELT TYPE	PV6 TYPE
MAXIMUM ALLOWABLE BELT TENSION	120 kgf
PULLEY DIAMETER	∅125 mm ( 4.92 in. )
CLUTCH TYPE	HEAVY DUTY

NOTE:  
1. DIMENSIONS ARE TO VIRTUAL SHARP CORNERS UNLESS OTHERWISE SPECIFIED.  
2. COMPRESSOR TO BE CHARGED WITH NITROGEN PRIOR TO SHIPPING WITHIN 0.2 TO 1.6 kg/cm<sup>2</sup>.

DO NOT SCALE

REV.	RELEASED FOR	SCALE	PLOTTED	SCALE	REF.	MATERIAL	NAME	DWG. NO.	REV.
A	RELEASED FOR DESIGN DEVELOPMENT J Bobb 9/15/05	1:1	11	11	METRIC				
A	DESIGN VERIFICATION J Bobb 10/28/05								
A	RELEASED FOR PRODUCTION VAL. 2 J Bobb 10/28/05								
A	RELEASED FOR PRODUCTION J Bobb 10/28/05								

<b>SANDEN</b>	
SPECIAL INTERNATIONAL DIMENSIONS, INC.	
THIS DRAWING AND THE INFORMATION CONTAINED HEREON ARE CONFIDENTIAL AND PROPRIETARY TO Sanden International (U.S.A.), Inc. and are received in CONFIDENCE and shall not be used, copied, or disclosed to others without the written permission of Sanden International (U.S.A.), Inc.	
INTERPRETATION OF THIS DRAWING PER ASME Y14.5M-1994	
THIRD ANGLE PROJECTION	
SIZE D	
MATERIAL:	
NAME	
COMPRESSOR	
DWG. NO. 4377-6000	
REV. B	