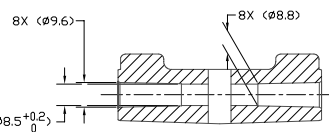
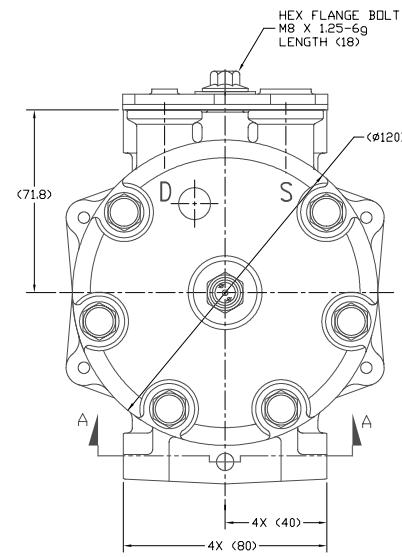
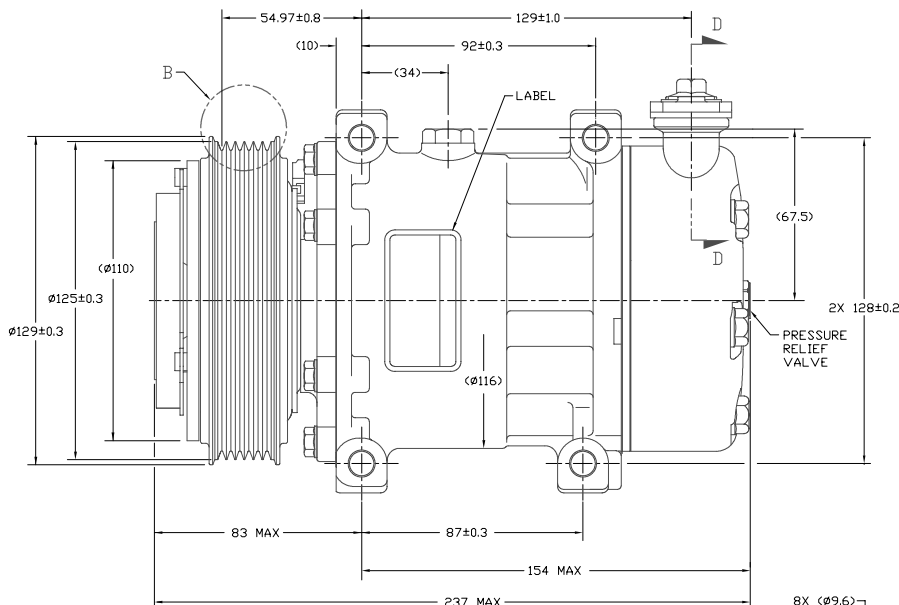
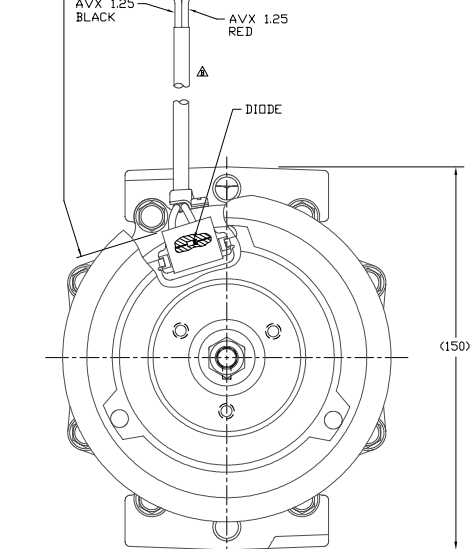
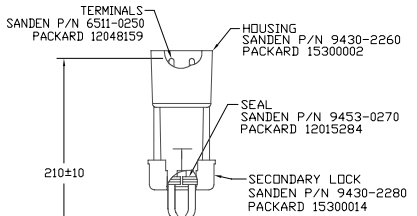
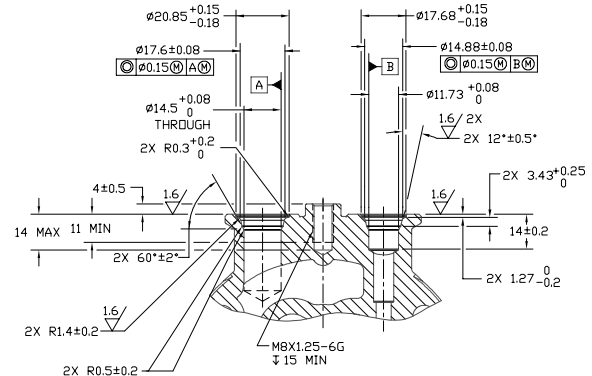
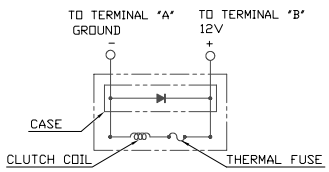
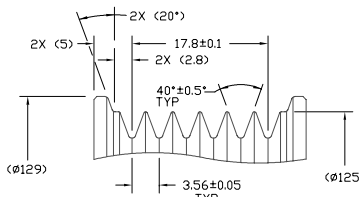


16 | 15 | 14 | 13 | 12 | 11 | 10 | 9 | 8 | 7 | 6 | 5 | 4 | 3 | 2 | 1

PCDN	REV	APPV DATE	REVISIONS	DRN	ESGN	CHK	APPV
806364	Δ	10/24/06	INITIAL ISSUE REF PROJECT ASSY CELL WINDING 6432-6340 "6FZ" WAS 14-15-6260 "6FZ"	JS	AA	DRL	AA

CAVITY "A" CAVITY "B"



COMPRESSOR SPECIFICATIONS (REF)

DISPLACEMENT PER REVOLUTION	154.9 cc / rev. (9.5cuin. / rev.)
MAXIMUM ALLOWABLE R.P.M.	8000 R.P.M.
MAXIMUM ALLOWABLE CONTINUOUS R.P.M.	6000 R.P.M.
REFRIGERANT	R134a
OIL (SP-15)	300 cc (10.1 fl.oz.)

CLUTCH SPECIFICATIONS (REF)

RATED VOLTAGE	DC 12V
BREAKAWAY TORQUE	3.5 kgf·m min. @ 12V
MINIMUM ENGAGEMENT VOLTAGE	7.5V @ AIR GAP 0.6mm
POWER CONSUMPTION	49 watts max.
BELT TYPE	PV6 TYPE
MAXIMUM ALLOWABLE BELT TENSION	120 kgf
PULLEY DIAMETER	Ø125 mm (4.92 in.)
CLUTCH TYPE	HEAVY DUTY

- NOTE:
1. DIMENSIONS ARE TO VIRTUAL SHARP CORNERS UNLESS OTHERWISE SPECIFIED.
 2. COMPRESSOR TO BE CHARGED WITH NITROGEN PRIOR TO SHIPPING WITHIN 0.2 TO 1.6 kg/cm².

DO NOT SCALE

REV. LEVEL	RELEASED FOR PRODUCTION	DATE	11/25/05	APPV	BB
REV. LEVEL	DESIGN VALIDATION	DATE	11/25/05	APPV	BB
REV. LEVEL	PRODUCTION VAL.	DATE	11/25/05	APPV	BB
REV. LEVEL	PRODUCTION	DATE	11/25/05	APPV	BB

SANDEN
SPECIAL INTERNATIONAL METRIC 1:1
SCALE REF 1:1
PLOTTED SCALE REF 1:1 METRIC

INTERPRETATION OF THIS DRAWING PER ASME Y14.5M-1994

THIRD ANGLE PROJECTION

MATERIAL:

NAME: COMPRESSOR

DWG. NO. 4376-6000

REV. B

16 | 15 | 14 | 13 | 12 | 11 | 10 | 9 | 8 | 7 | 6 | 5 | 4 | 3 | 2 | 1