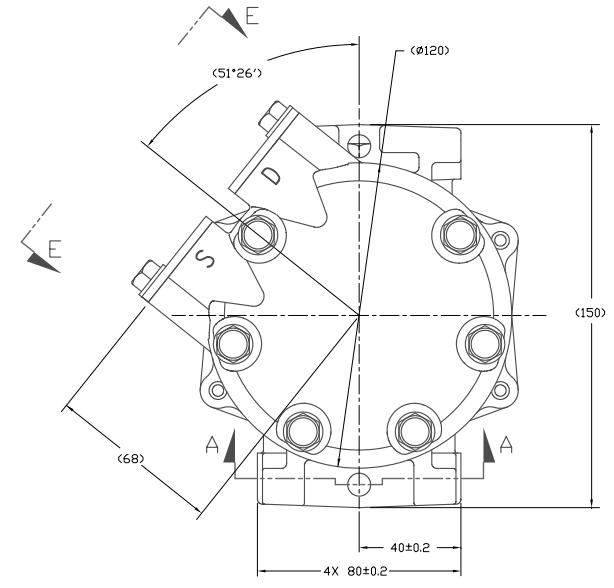
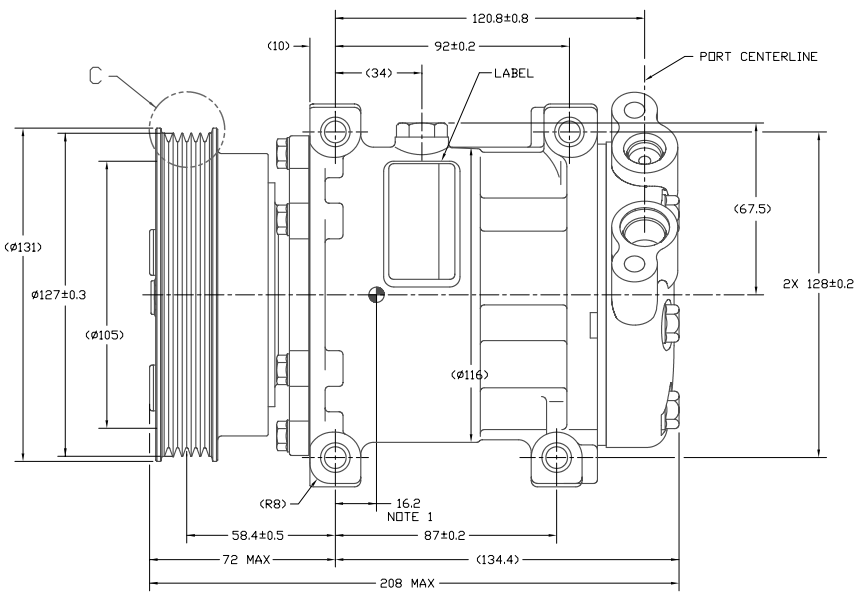
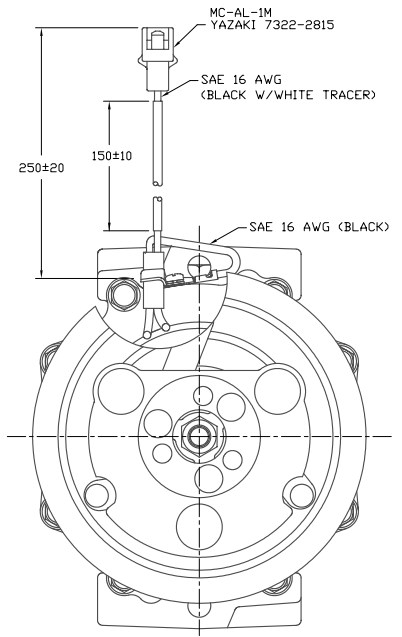
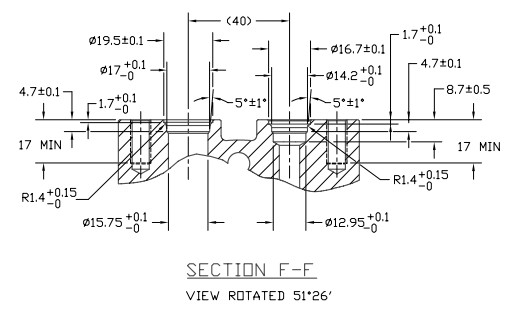
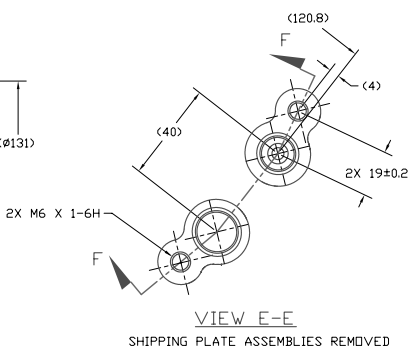
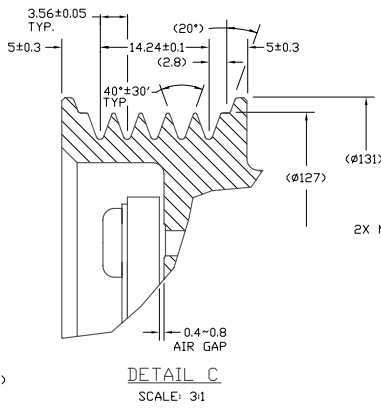
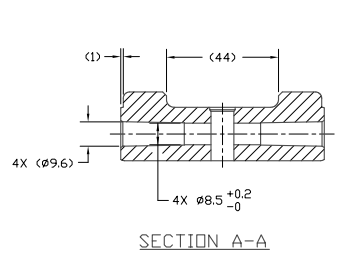


PKCN NO.	REV.	DATE	REVISIONS	DWN	ESGN	CHK	APPV
			INITIAL ISSUE REF. Dwg. NO. 4689-6000 REV. G				



NOTES:
1. INDICATES CENTER OF GRAVITY.

COMPRESSOR SPECIFICATIONS (REF)

DISPLACEMENT PER REVOLUTION	154.9 cc / rev. (9.5cuin. / rev.)
MAXIMUM ALLOWABLE R.P.M.	8000 R.P.M.
MAXIMUM ALLOWABLE CONTINUOUS R.P.M.	6000 R.P.M.
REFRIGERANT	R134a
OIL (SP-15)	240cc (8.1 fl.oz.)
WEIGHT	7.0kg (15.4 lb.)

CLUTCH SPECIFICATIONS (REF)

RATED VOLTAGE	DC 12V
BREAKAWAY TORQUE	2.9 kgf-m min. @ 12V
MINIMUM ENGAGEMENT VOLTAGE	7.5V @ AIR GAP 0.6mm
POWER CONSUMPTION	51 W MAX
BELT TYPE	PVS TYPE
MAXIMUM ALLOWABLE BELT TENSION	75 kgf
PULLEY DIAMETER	127mm (5.0 in.)
CLUTCH TYPE	STANDARD

REV.	RELEASED FOR	DATE	SCALE	PLOTTED	SCALE
A	DESIGN DEVELOPMENT	11/15	1:1	1:1	METRIC
	DESIGN	11/15			
	CHK	11/15			
	APPV	11/15			
A	DESIGN VALIDATION	11/15			
	DESIGN	11/15			
	APPV	11/15			
A	PRODUCTION VAL.	11/15			
	DESIGN	11/15			
	APPV	11/15			
A	PRODUCTION	11/15			
	DESIGN	11/15			
	APPV	11/15			

SANDEN
SANDEN INTERNATIONAL (U.S.A.), INC.

This drawing and the information contained hereon are CONFIDENTIAL and PROPRIETARY to Sanden International (U.S.A.), Inc. and shall not be used, copied, or disclosed to others without the written permission of Sanden International (U.S.A.), Inc.

INTERPRETATION OF THIS DRAWING PER ASME Y14.5M-1994

THIRD ANGLE PROJECTION

MATERIAL:

NAME: COMPRESSOR

DWG. NO. 4375-6000

REV. A

DO NOT SCALE