

COMPRESSOR SPECIFICATIONS

DISPLACEMENT PER REVOLUTION	104.8 cc/rev. (6.4 in ³ /rev.)
MAXIMUM ALLOWABLE SPEED	12000 R.P.M.
MAXIMUM ALLOWABLE CONTINUOUS SPEED	10000 R.P.M.
REFRIGERANT	R134a
OIL (SP-10)	240 cc (8.12 fl. oz.)
WEIGHT	45.1 N (10.1 lbf, 4.6 kgf)

CLUTCH SPECIFICATIONS

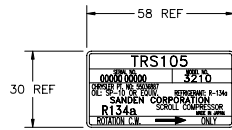
RATED VOLTAGE	DC 12V
BREAKAWAY TORQUE	MIN 35.3 N·m (26.0 ft·lbs., 3.6 kgf·m) AT 12V
MINIMUM ENGAGEMENT VOLTAGE	7.5V AT AIR GAP 0.5 mm REF
POWER CONSUMPTION	48 WATTS MAX.
BELT TYPE	POLY V 7G Type
PULLEY DIAMETER	95 mm DIA (3.7 in.)
WEIGHT	18.6 N (4.2 lbf, 1.9 kgf)
CLUTCH TYPE	STANDARD

THERMAL PROTECTOR SPECIFICATIONS

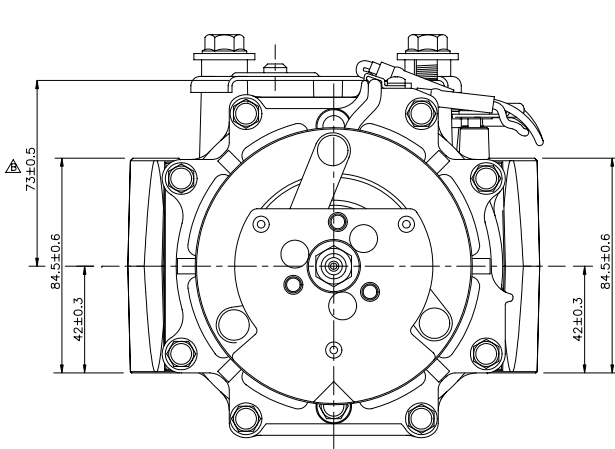
TYPE	BIMETAL
CUT OFF TEMPERATURE	125 ± 3°C (257 ± 5°F)
CUT IN TEMPERATURE	110 ± 6°C (230 ± 11°F)

DIODE

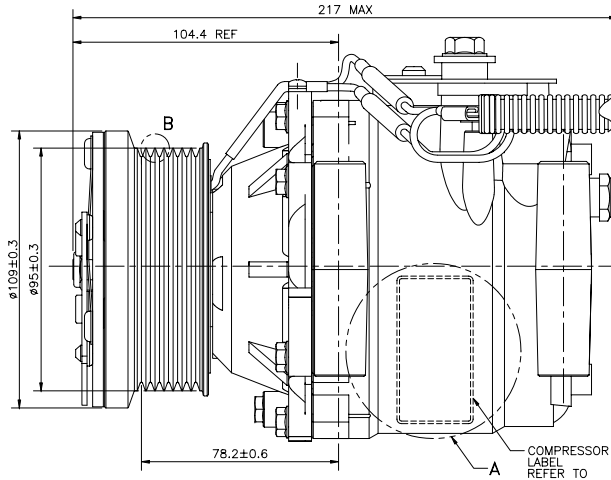
MOTOROLA No.	1N4007 OR EQUIVALENT
--------------	----------------------



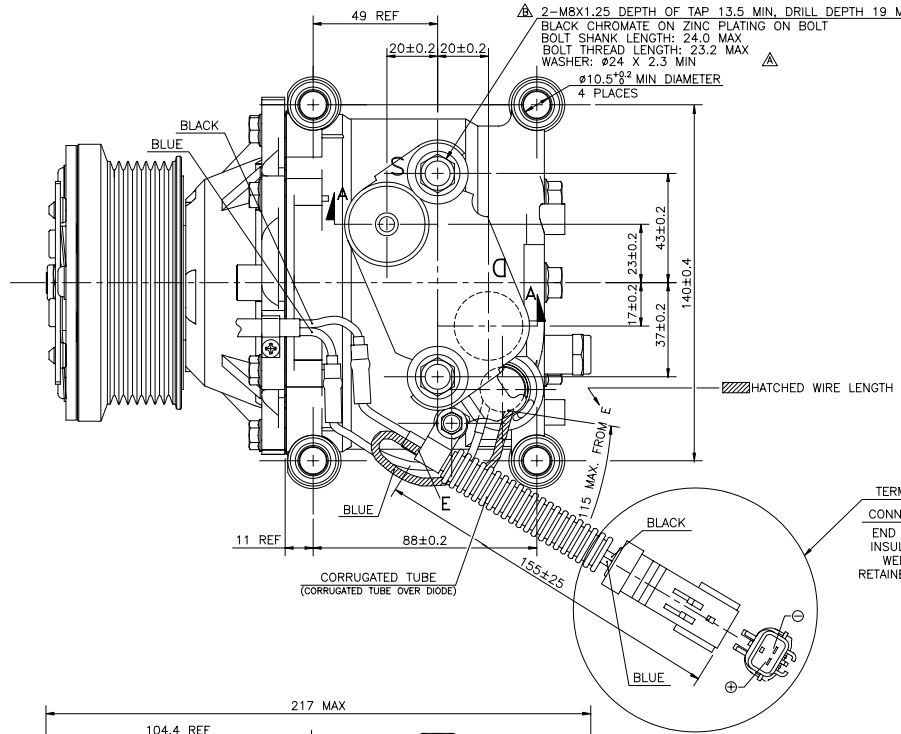
DETAIL A



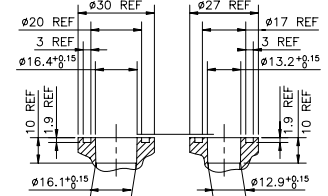
CLOCKWISE ROTATION



COMPRESSOR LABEL REFER TO DETAIL A

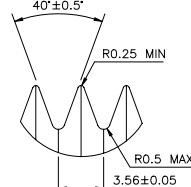


REVISONS		DESCRIPTION	DATE	DRWN	ENGR	CHD	APPR
950494	Δ	2-MØX1 DEPTH OF TAP 13.5 MIN, DRILL DEPTH 19 MAX BLACK CHROMATE ON ZINC PLATING ON BOLT BOLT SHANK LENGTH: 24.0 MAX BOLT THREAD LENGTH: 23.2 MAX WASHER: Ø24 X 2.3 MIN Ø10.5 ± 0.2 MIN DIAMETER 4 PLACES	2/13/94	Ray Krauss	David McClung	John Calhoun	Jack Bayless
950496	Δ	2-MØX1 DEPTH OF TAP 13.5 MIN, DRILL DEPTH 18 MAX BLACK CHROMATE ON ZINC PLATING ON BOLT BOLT SHANK LENGTH: 24.0 MAX BOLT THREAD LENGTH: 23.2 MAX WASHER: Ø24 X 2.5 MIN 2 PLACES	2/13/94				
950463	Δ	CHANGED: PORT CASING HEIGHT 73±0.5 WAS 72±0.5; PORT CASING BOLT/THREAD MØX1.25 WAS MØX1; & PORT CASING DRILL DEPTH 19 MAX WAS 18 MAX.		V.P.			

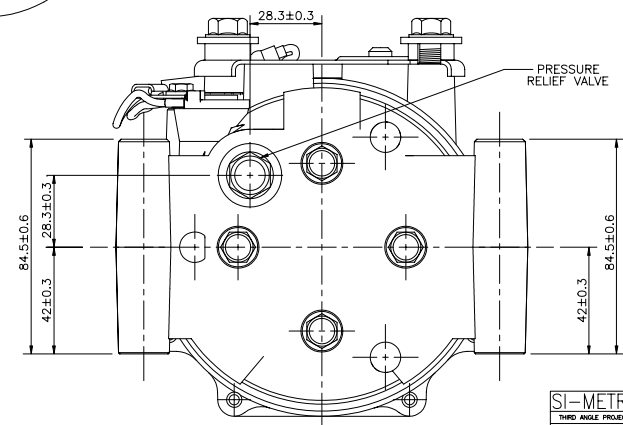


SECTION A-A

TERMINAL : CHRYSLER # 4687766
CONNECTOR : CHRYSLER # 4687921
END SEAL : CHRYSLER # 4687942
INSULATOR : CHRYSLER # 4687792
WEDGE : CHRYSLER # 4687976
RETAINER SEAL : CHRYSLER # 4687938



VIEW B: 5:1



SI-METRIC
THIRD ANGLE PROJECTION

NOTE:
COMPRESSOR MUST CONFORM TO CHRYSLER STANDARD PF-8758 EXCLUDING CORROSION STANDARD WHICH MUST CONFORM TO SANDEN STANDARD SIA-ES 2002 REVISION B.

SIGNATURES	DATE	 SANDEN INTERNATIONAL (U.S.A.), INC.
DRWN: RICHE	10/26/94	
ENGR: DMCLUNG	10/26/94	NAME: COMPRESSOR MODEL: TRS105H3210 SHEET: 1 OF 1 DWG NO: 3210-6000
CHD: CALHOUN	10/28/94	
ENGR: CALHOUN	11/3/94	SCALE: 1:1 MATERIAL:
APPR: CALHOUN	11/3/94	DO NOT SCALE