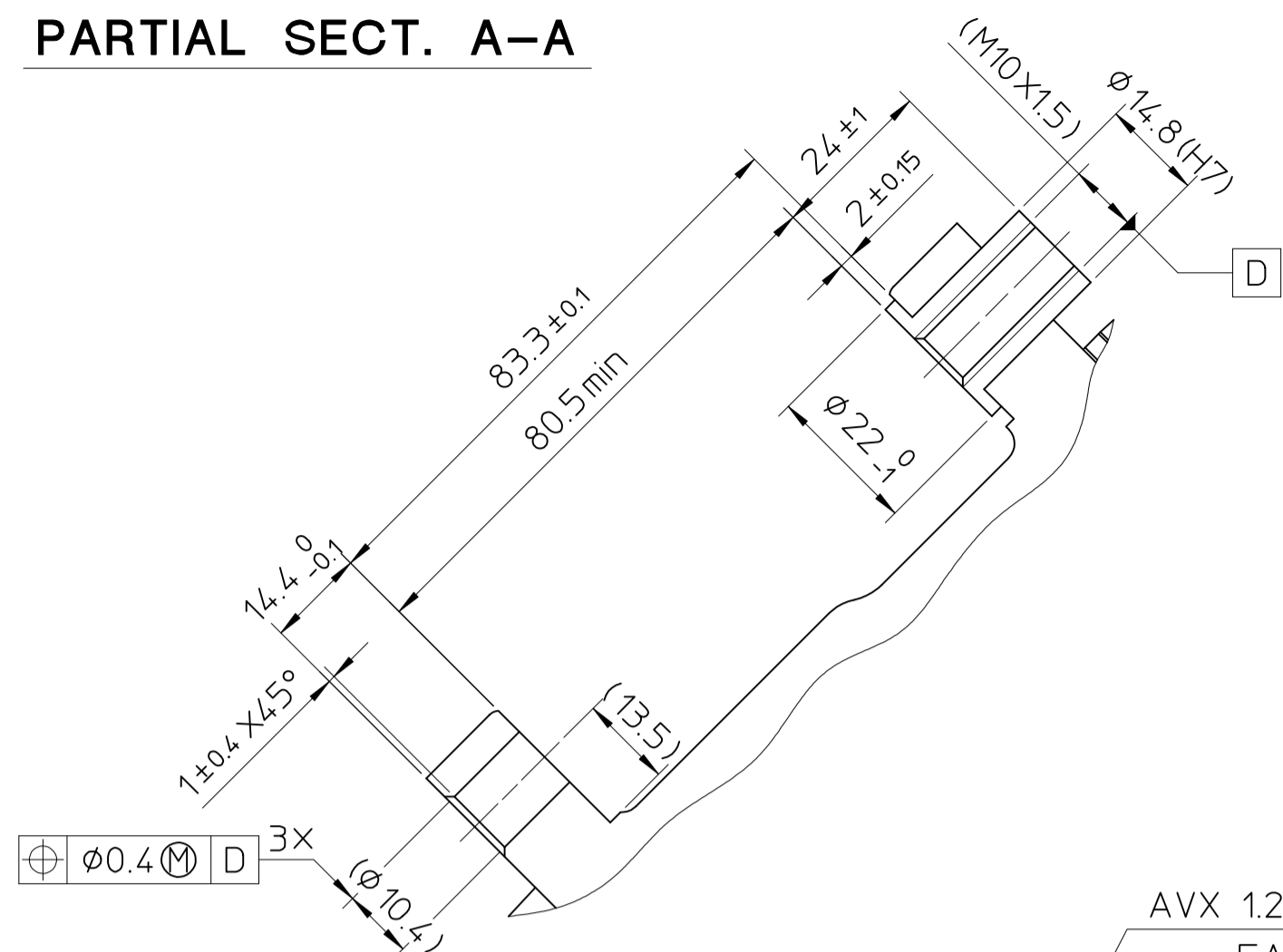
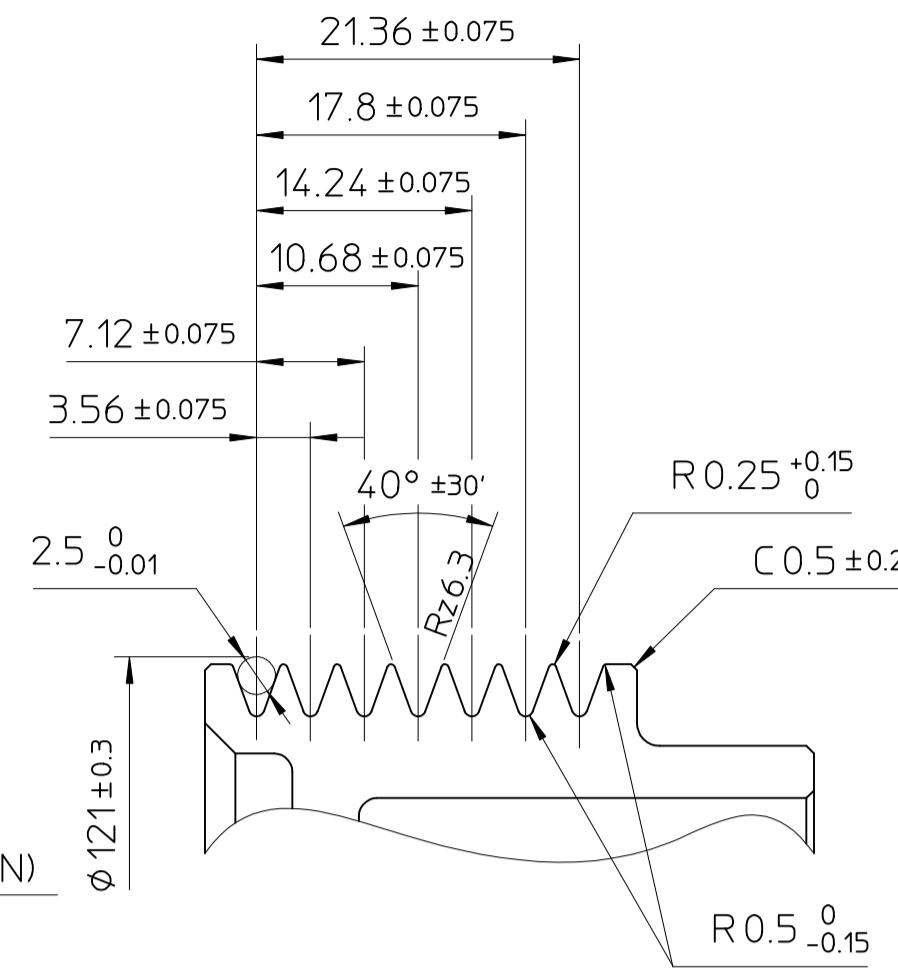


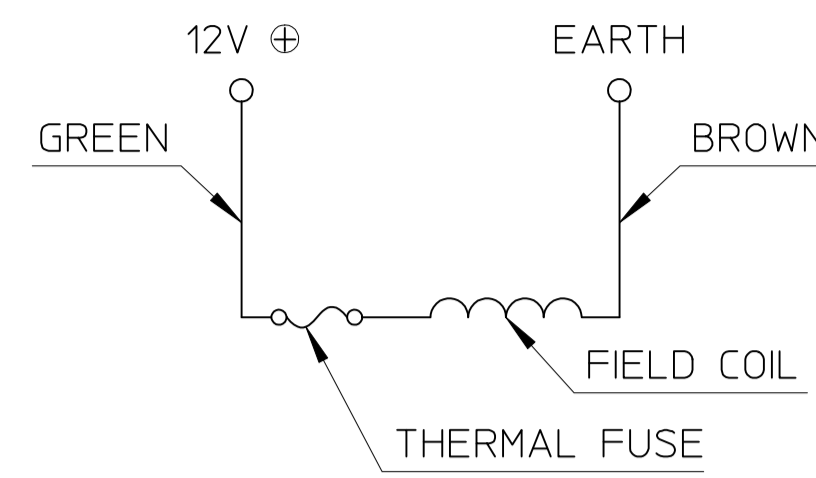
PARTIAL SECT. A-A



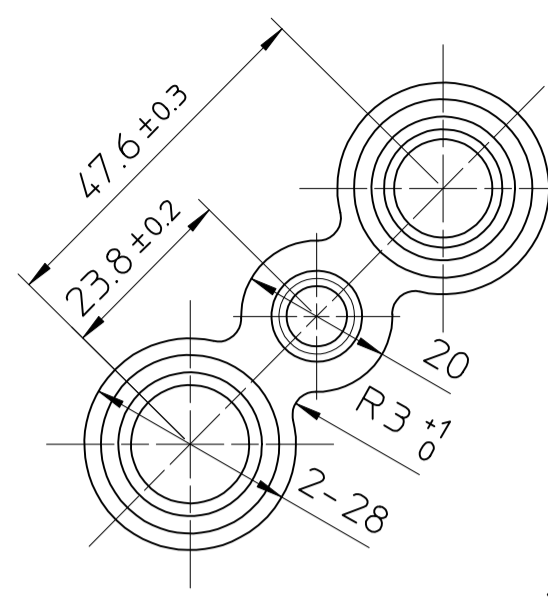
DETAIL OF GROOVE (2:1)



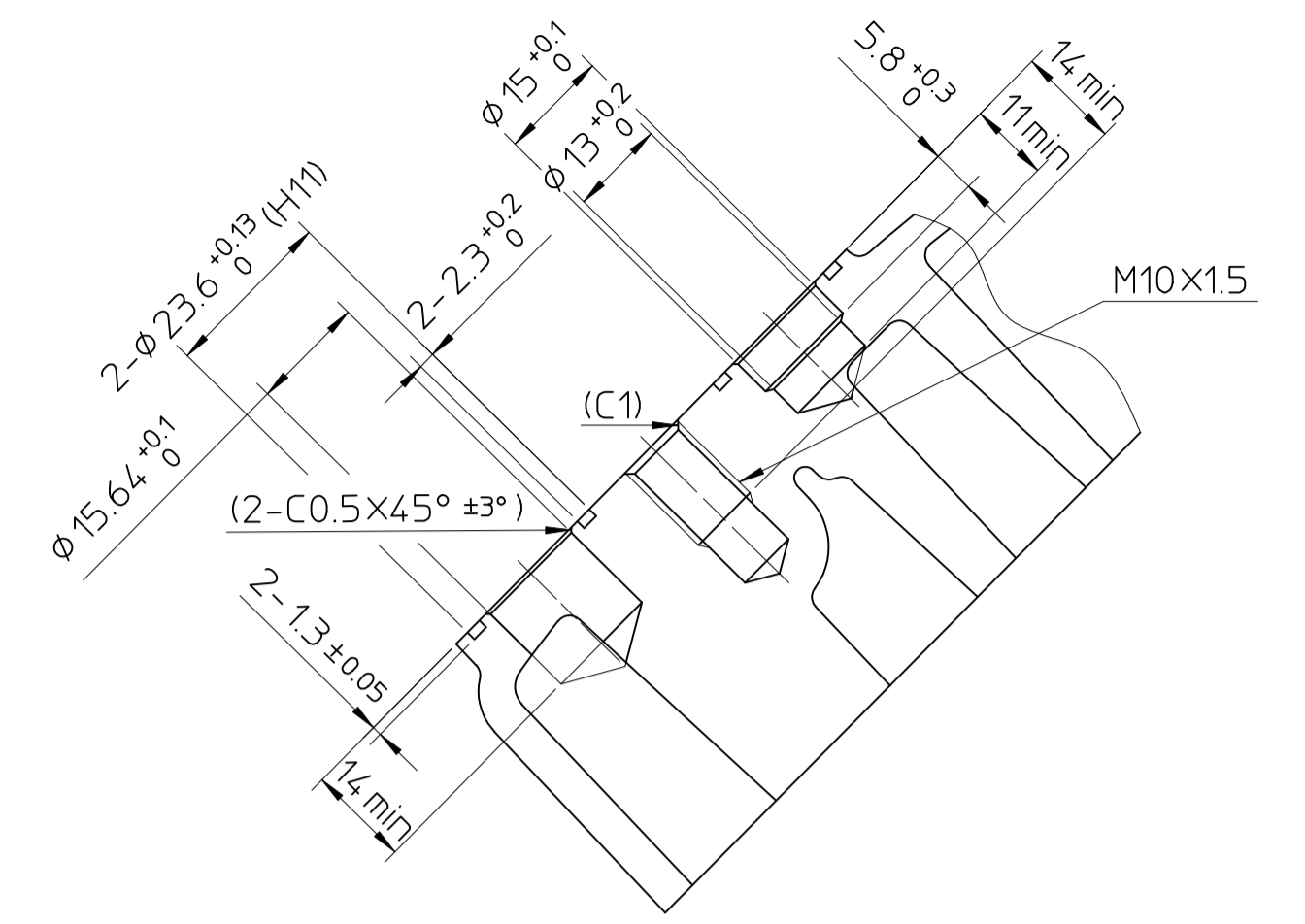
CIRCUIT DIAGRAM



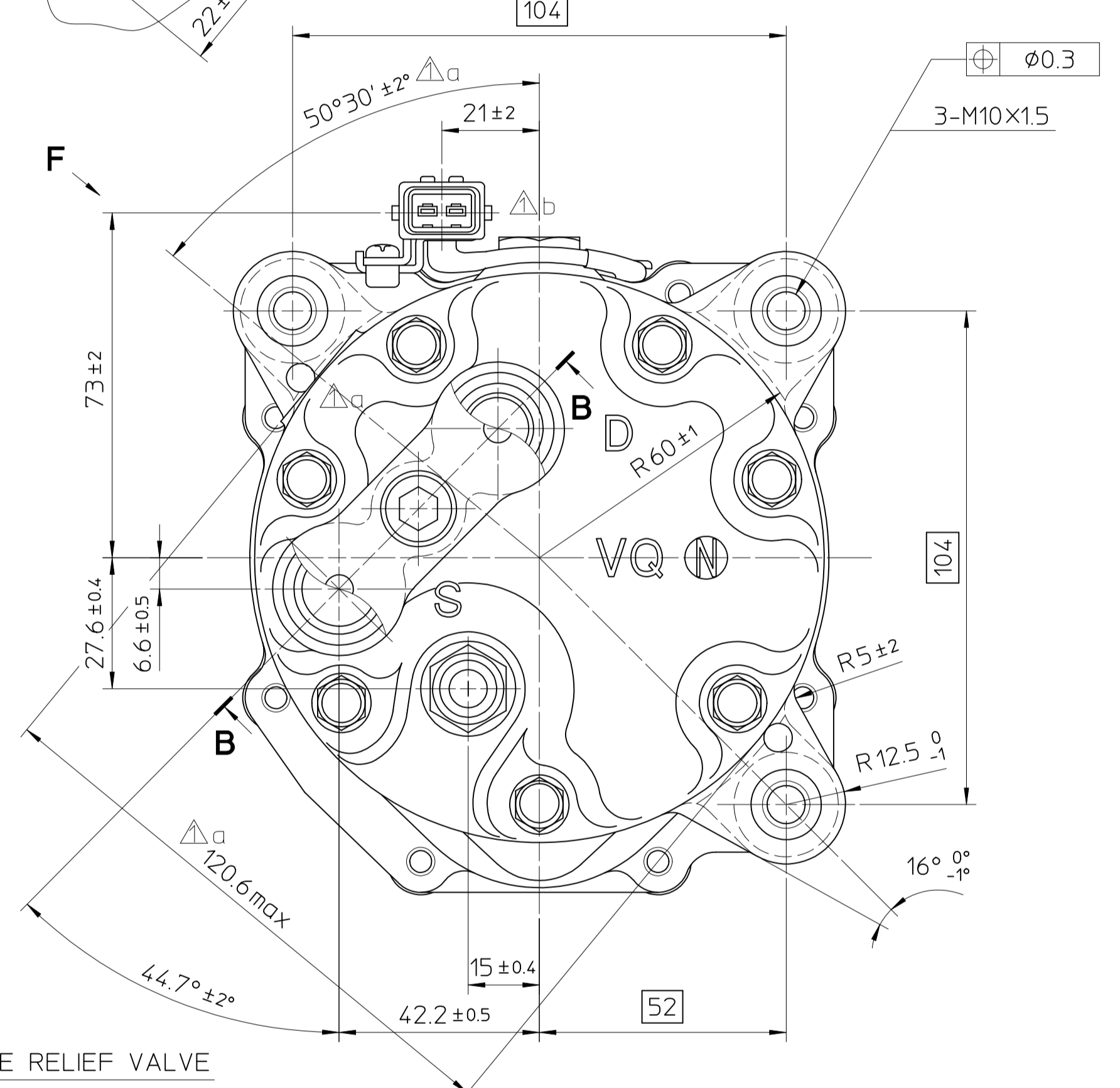
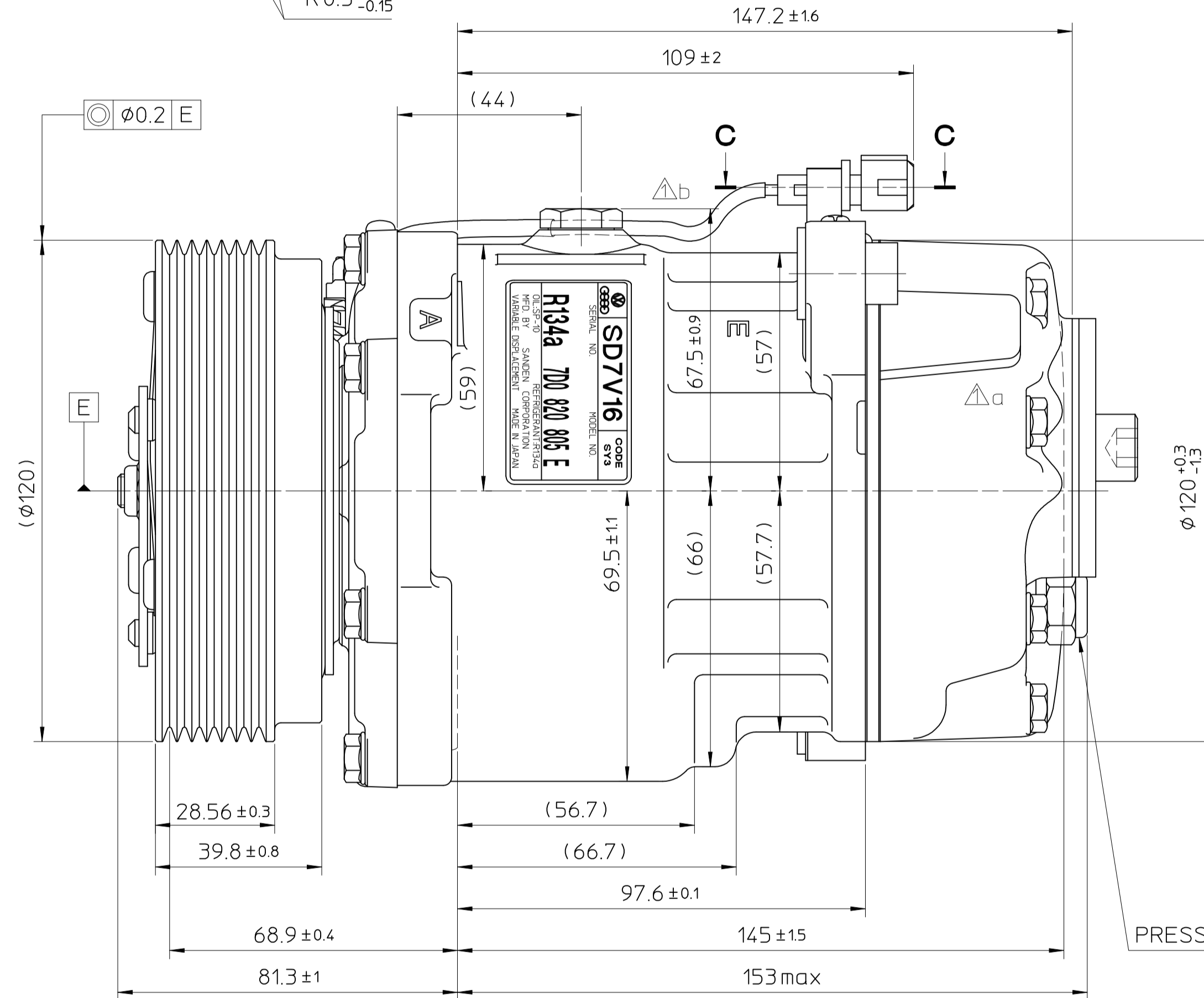
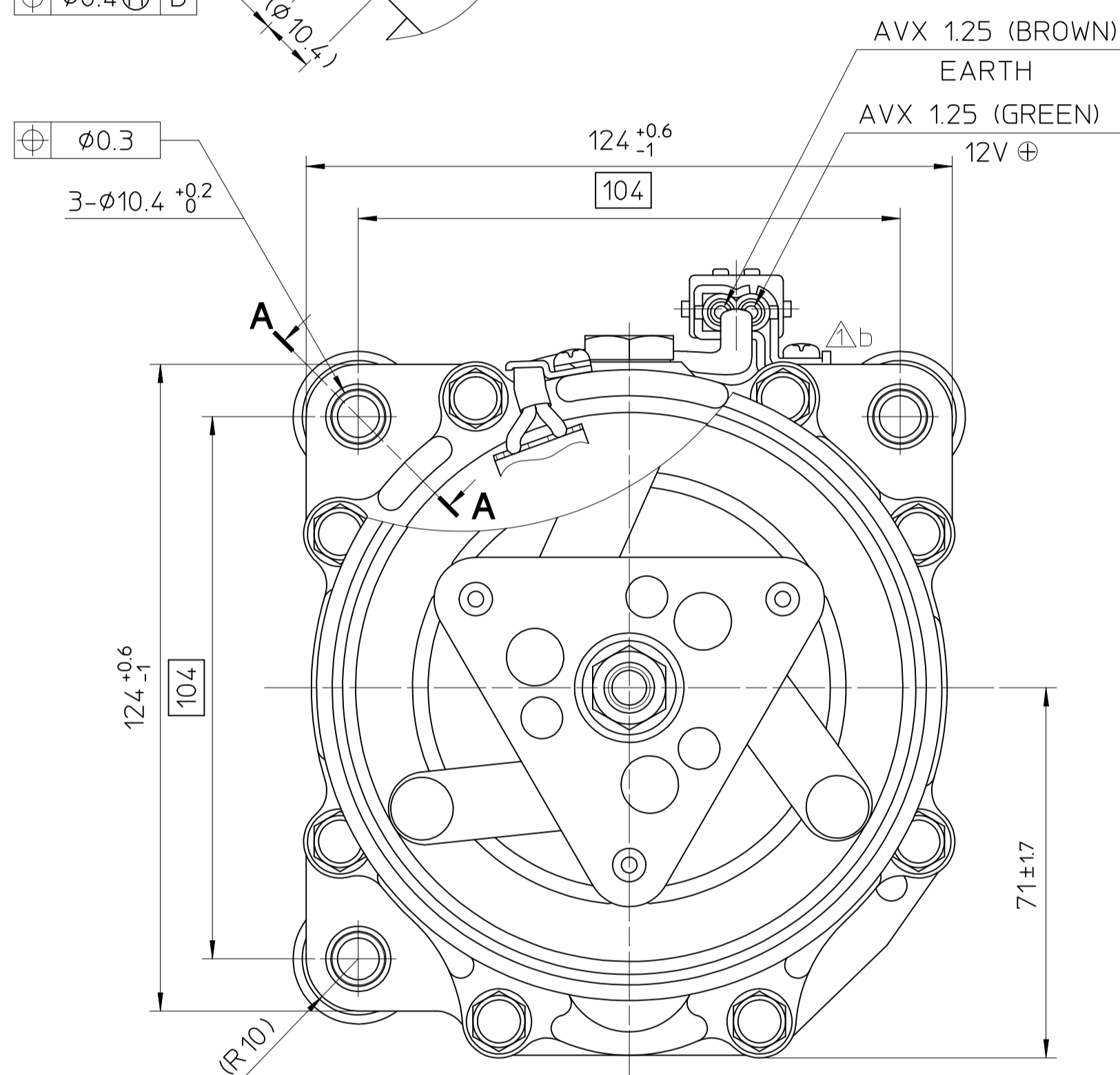
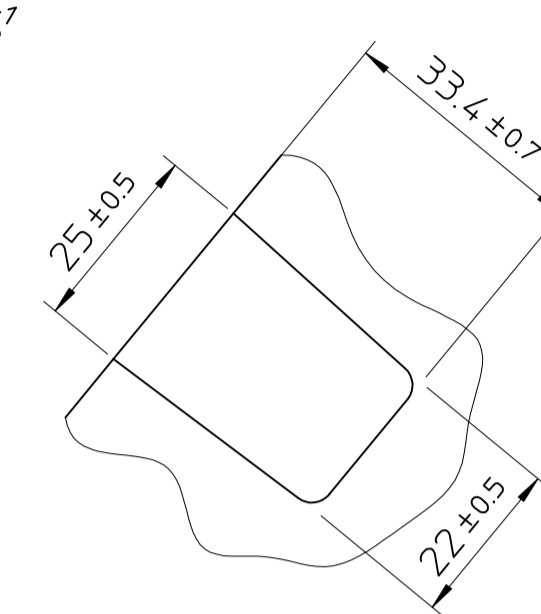
DETAIL OF PORT



PARTIAL SECT. B-B



VIEW F



COMPRESSOR MOUNTING ANGLE (1:2)

COMPRESSOR SPECIFICATIONS

BORE	φ29.3 mm
MAXIMUM STROKE	34.2 mm
MINIMUM STROKE	1.7 mm
NUMBER OF CYLINDER	7
MAXIMUM DISPLACEMENT PER REVOLUTION	161.3 cc/rev.
MINIMUM DISPLACEMENT PER REVOLUTION	8.1 cc/rev.
MAXIMUM ALLOWABLE CONTINUOUS SPEED	8000 r.p.m.
MAXIMUM DOWNSHIFT SPEED	8500 r.p.m.
REFRIGERANT	R-134a
OIL	SP-10 OR EQUIVALENT
OIL CHARGE	135 cc
ROTATION	CLOCKWISE COUNTER CLOCKWISE
WEIGHT	(4.2) kg

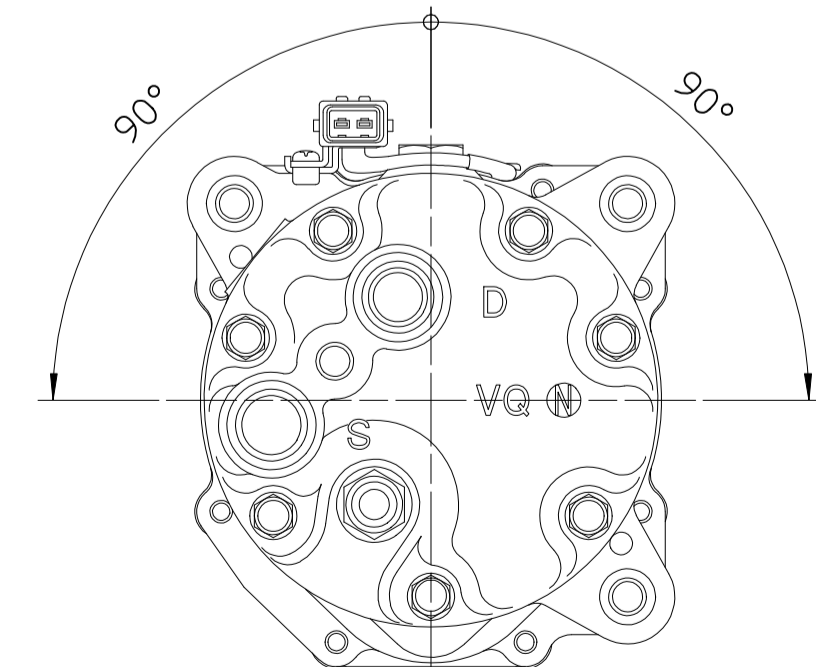
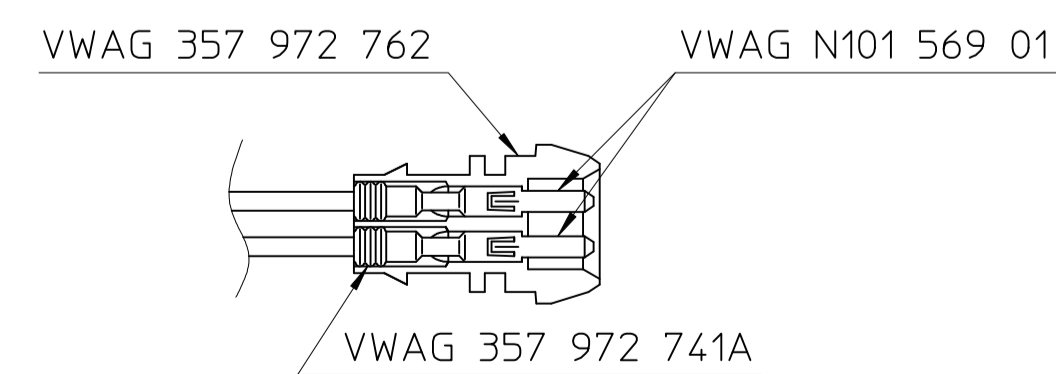
CLUTCH SPECIFICATIONS

RATED VOLTAGE	DC 12 V
MINIMUM BREAKAWAY TORQUE	4.3 kg·m
MINIMUM ENGAGEMENT VOLTAGE	DC 7.5 V
MAXIMUM POWER CONSUMPTION	43 W
MAXIMUM ALLOWABLE CONTINUOUS SPEED	8000 r.p.m.
MAXIMUM DOWNSHIFT SPEED	8500 r.p.m.
BELT TYPE	PV TYPE
PULLEY DIAMETER	φ120 mm
WEIGHT	(2.4) kg
THERMAL FUSE CUT OFF TEMPERATURE	182±5 C°

PRESSURE RELIEF VALVE SPECIFICATIONS

RELIEF PRESSURE	MINIMUM 36.0 bar	MAXIMUM 44.0 bar
EXHAUST FLOW	MINIMUM 113.2 NL/min. at 47.0 bar	
RESEALED PRESSURE	MINIMUM 32.5 bar	

PARTIAL SECT. C-C



7D0 820 805 E

△	MATERIAL	PART NO.	1214	NAME	COMPRESSOR
△	THIRD ANGLE PROJECTION	SCALE	1:1	MODEL	SD7V16QN1214
△	DESIGNED BY	DATE	22, Apr, 1999	DRAWING NO.	1214 - 6000
△	CHECKED BY	DATE	22, Apr, 1999	A	
△	APPROVED BY	DATE	22, Apr, 1999		
△	REVISION RECORD	BY	DATE		
△	CHANGE OF CYLINDER HEAD SUPPLIER		Y.A.22 APR '99		
△	EXCHANGED PROTECTIVE TUBE				